

Chicago Southland


SPORTS

venue guide

Chicago
Southland
Convention & Visitors Bureau
Just Beyond the City Limits



ILLINOIS
MILE AFTER MAGNIFICENT MILE



With reasonable prices, convenient transportation options, exciting extracurricular activities and a wide variety of easily accessible venues for over 45 sports, the **Chicago Southland** provides unlimited potential for your next sporting event *Just Beyond the City Limits*.

The Chicago Southland, the 62 south and southwest suburbs of Chicago, is an ideal sporting event and tournament location, conveniently accessible via Interstates 55, 57, 80, 94, 294 and 355, minutes from downtown Chicago and Midway and O'Hare International Airports, making getting to and from your event a breeze.

Area 1

Bridgeview, Burbank & Oak Lawn

Area 2

Alsip, Crestwood, Oak Forest, Orland Hills & Orland Park

Area 3

Chicago Heights, East Hazel Crest, Harvey, Homewood & Markham

Area 4

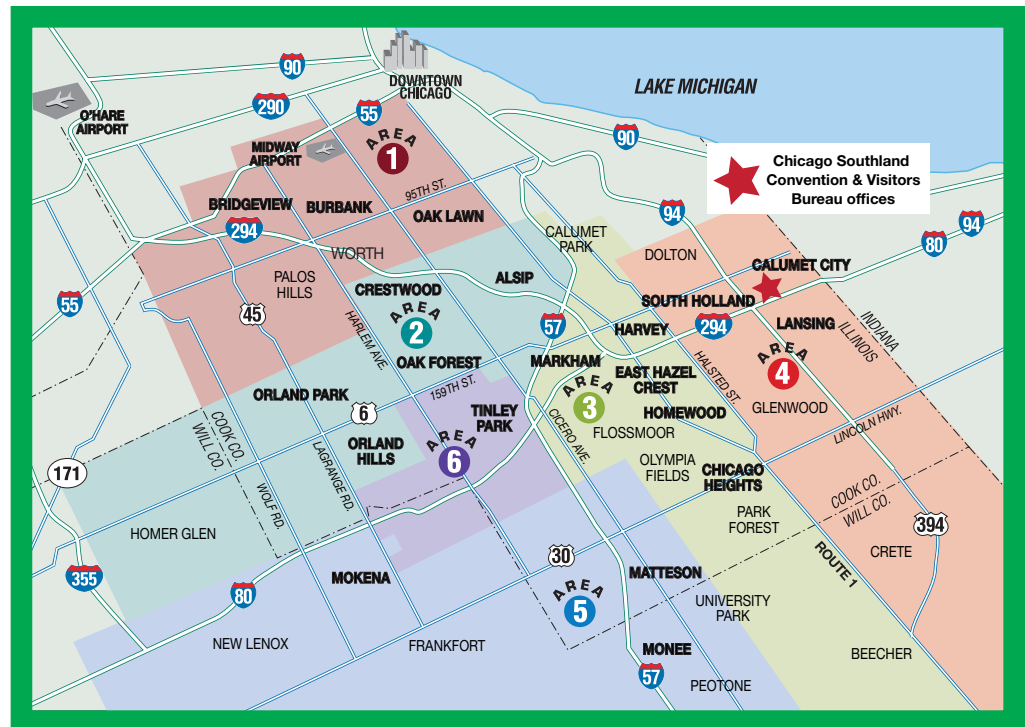
Calumet City, Lansing & South Holland

Area 5

Matteson, Mokena & Monee

Area 6

Tinley Park



PlayChicagoSouthland.com

708-895-8200 • 888-895-3211 • Fax 708-895-8288

Joel Koester, Sports Sales Manager

Sports@VisitChicagoSouthland.com

2304 173rd Street, Lansing, IL 60438

SCORECARD TO SUCCESS

- 1997 USGA U.S. Senior Open
- 2003 USGA U.S. Open
- 2015 USGA U.S. Amateur
- Amateur Athletic Union
- American Junior Golf Association
- American Pool Players Association
- American Taekwondo Association
- Chicagoland Lacrosse Getaway Festival
- Cochrane & Jablonic Cups, Southland Regatta (Collegiate Rowing)
- Illinois High School Association AA Baseball Finals
- Illinois High School Association Boys Gymnastics Finals
- IMG 7v7 Midwest Regional Championship
- International Cycling Classic
- NCAA Division II Baseball Regional
- National Professional Paintball League Super 7 World Series
- National Softball Association
- Nike Spring Showdown AAU/NCAA Sanctioned Basketball Event
- North American Grappling Association
- Professional Bowlers Association
- U.S. Open Pro Mini Golf Tournament
- USA Judo
- USA Rugby
- USASA Soccer - Midwest & National Cup Finals
- USSSA Baseball
- Western Golf Association

ACCOMMODATIONS

It's no challenge to find somewhere to stay in the Chicago Southland. There are over 5,000 hotel rooms in more than 65 hotels, including major chains like Hilton, Holiday Inn and others.

ACCESSIBILITY

Easily accessible, Chicago Southland has six interstates that intersect the region—I-55, I-57, I-80, I-94, I-294 and I-355 and Midway and O'Hare International Airports nearby. Commuter trains connect the suburbs with downtown Chicago.

SERVICES & INCENTIVES

The Chicago Southland CVB can assist you in many ways from facility selection through on-site registration. We are your primary source of information for the Chicago Southland area. You can rely on the expertise of our professional staff to assist you in all facets of planning your next event. We offer a variety of free professional services: welcome banners, welcome kits and assistance with pre/post PR to just name a few. Be sure to ask about our current incentives and promotions.

ATTRACTIONS

Balmoral Park Race Track

Brookfield Zoo

Chicago Fire Soccer Club

Children's Museums

Windy City ThunderBolts

Minor League Baseball

35 Public Golf Courses

Family Entertainment Centers

Nature Centers

Railfan Sites

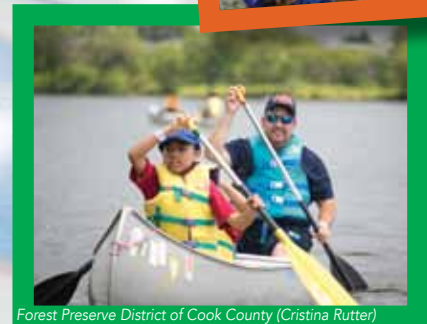
Theatres

Toyota Park

**Chicago Attractions
are a short drive away**



Chicago Zoological Society (Jim Schulz)



Forest Preserve District of Cook County (Cristina Rutter)

FAST PHONE FACTS

Chicago Southland Convention and Visitors Bureau
708-895-8200 Toll Free 888-895-8233

VISITOR INFORMATION

Illinois Hotel & Lodging Association 312-346-3135
Illinois Bureau of Tourism 800-2-CONNECT
Illinois Restaurant Association 312-787-4000

VISITOR INFORMATION CENTERS

Chicago Southland Visitor Information Center
Chicago Southland Lincoln Oasis
700 East Tri State Tollway
South Holland, IL 60473
708-596-8300
Days/Hours: Open 7 days a week

Prairie View North
I-57 Rest Area - Northbound
North of Peotone Exit
Monee, IL 60449
DAYS/HOURS: M-Su WINTER: 8:30AM-4:30PM Closed
Thanksgiving, Christmas & New Years
SUMMER: 8AM-6:30PM End of April-End of October

AIRPORTS

Midway International Airport 773-838-0600
Airlines Serving Midway Airport
AirTran Airways 800-247-8726
Delta 800-221-1212
Frontier Airlines 800-432-1359
Porter Airlines 888-619-8622
Southwest Airlines 800-435-9792
Sun Country Airlines 800-359-6786
Volaris Airlines 866-988-3527

Chicago O'Hare International Airport 773-686-2200 800-832-6352
Airlines Serving O'Hare Airport
Alaska Airlines 800-252-7522
American Airlines 800-433-7300
Delta 800-221-1212
Jet Blue 800-538-2583
Spirit Airlines 801-401-2220
United Airlines 800-864-8331
USAirways 800-428-4322
Virgin America 877-359-8474

Lansing Municipal Airport 708-418-5888

AIRPORT TRANSPORTATION

1st US Taxi 708-361-1222
303 Taxi 708-335-8294
A Southside Limousine Service 708-633-7155
A V.I.P. Limousine 708-425-0401
Abercrombie Limousines Limited 815-469-1091
Absolute Dream Limousine Service, Inc. 708-535-7400
708-229-9400
A-Bylak Limousine 708-425-7300
Alante Limo 800-450-7700
All James Jones Limousine 773-785-5466
Allegiance Limousine 708-478-1600
Allegro Limousine Service, Inc. 708-895-9998
American Dream Limousine 708-301-2700
American Family Taxi & Limo 708-705-0711
American Taxi Dispatch 708-424-7878
Amm's Limousine Service, Inc. 847-446-5148
Avanti Limousine 708-645-6650
Beverly Express Transportation 312-833-0288
Blue Line Taxi 708-679-6859
Butler Limousine Service 708-758-5466
Carolyn's Classic Limousine Service, Inc. 708-335-2464
Chicago Ridge Cab Company 708-422-2222
Clanton Limousine Service LTD 708-205-6476
Coach USA – Chicago 773-254-6400
Coach USA Airport Super Saver 800-248-TRIP
Cozy Carriage Limo 708-336-3680
Embark Reservation Center 630-920-8888
Express on Time Taxi and Limo 708-532-0123
Go Airport Express 773-843-2421
H & M Limousine 847-807-6098
Holiday/Orland Park Limousine, Inc. 708-362-2549
Kendon Transportation Systems 800-767-1925
708-388-4466
Lawn Limousine 708-597-2787
Luxury Limousine of Orland Park 708-460-8388
Mainstreet Limo Inc. 708-425-0077
Manny's Limousine Service 708-785-1008
Marquee Limousine 708-403-0577
McNamara Taxi Cab Service of Hickory Hills 708-499-5777
McNamara Taxi Cab Service of Oak Lawn 708-420-4704
McNamara Taxi Cab Service of Palos Heights 708-499-5777
Metro Checker 708-499-4222
Midwest Suburban Taxi Cab LLC 708-247-1943
New Lenox Limousine 773-653-5466
888-546-6525
O'Brien's Taxi Service 773-614-6117
Orland Hills Limo Service 800-215-0516
Primo Limo 708-546-3495
Regency Enterprise Limousine 708-755-8800
Southtown Limousine 708-301-1787
Southwest Taxi 708-349-0400
Suburban Taxi & Limo 708-444-4450
Tinley Park Yellow Cab 708-889-5786
Tru's Luxurious Limousine Service 773-425-4546
Visions Taxi 708-932-0568
Watkins Transportation 708-825-9207
White Knight Limo Service 708-798-0053

AMBULANCE SERVICE

AeroMedical Transport Specialists 800-548-2376
American Jets 800-225-3538
Advanced Air Ambulance 800-633-3590
Global Air Response 800-631-6565
U.S. Air Ambulance 800-633-5384

BUSES

Coach USA – Chicago 773-254-6400
Coach USA Airport Super Saver 800-248-TRIP
Greyhound 800-231-2222
Pace/RTA Travel Information Center 708-836-7000

CAMPGROUNDS & RECREATIONAL VEHICLE PARKS

The Emerald Trails 708-672-8700
Enchanted Shores of Killarney 708-258-6040
Plum Creek Nature Center 708-946-2216
Illinois Campground Association Directory 866-895-2267
www.illinoisgocamping.com

CAR RENTAL

AAA Automobile 24 Hour Service 800-222-4357
Alamo Rent A Car 800-327-9633
Avis Rent A Car 800-331-1212
Budget Rent A Car 800-527-0700
Dollar Rent A Car 800-800-4000
Enterprise Rent A Car 800-325-8007
Hertz 800-654-3131
National Car Rental 800-227-7368
Thrifty Car Rental 800-367-2277

CHARTER BUSES

Coach USA – Chicago 773-254-6400
Chicago Trolley & Double Decker Company 800-843-3247
Embark Reservation Center 630-920-8888
Free Enterprise System 800-323-5281 708-474-7474
Kendon Transportation Systems 800-767-1925
708-388-4466
Mid America Charter, Inc. 800-323-0312
Rek Travel/Chicago Charter Express 312-666-1000
888-33-BUSES

CHILD CARE REFERRAL SERVICES

Action for Children 312-823-1100
American Childcare, Svc. 312-644-7300
Kiddie Corp 800-942-9947

EMERGENCY NUMBERS

Emergency Only (in most municipalities) 911
Federal Bureau of Investigation 708-349-0004
312-421-6700
National Poison Control Center 800-222-1222
State Highway Patrol 312-368-4636
State Police, Cook County 847-294-4400
State Police, Will County 815-726-6377

HANDICAPPED TRANSPORTATION

Handicapped Transportation Service 708-535-3833

FAST PHONE FACTS

HOSPITALS

Advocate Christ Medical Center, Oak Lawn	708-425-8000
Advocate South Suburban Hospital, Hazel Crest	708-799-8000
Ingalls Memorial Hospital, Harvey	708-333-2300
Little Company of Mary Hospital and Health Care Centers, Evergreen Park	708-422-6200
Metrosouth Medical Center, Blue Island	708-597-2000
Palos Community Hospital, Palos Heights	708-923-4000
St. James Hospital & Health Center, Chicago Heights	708-756-1000
St. James Hospital & Health Center, Olympia Fields	708-747-4000
Silver Cross Hospital, New Lenox	815-300-1100

PHARMACIES (24 HOUR)

CVS	
Calumet City	708-832-2943
Walgreens	
Calumet City	708-868-5669
Hickory Hills	708-599-5603
Lansing	708-895-7937
Midlothian	708-687-1604
New Lenox	815-485-2735
Oak Lawn	708-425-6960
Olympia Fields	708-747-0121
Orland Park	708-532-7781
Orland Park	708-460-2021

RAIL

Amtrak	800-USA-RAIL
RTA/Metra	312-836-7000

ROAD CONDITIONS 312-DOT-INFO

TAXI SERVICE

AA Hazelcrest Cab	708-335-8294
American Taxi Dispatch	708-424-7878
Chicago Ridge Cab	708-422-2222
Marlon's Cab & Transportation	708-514-4987
McNamara Cab Co.	708-499-5777
Metro Yellow	708-499-4222
Riverdale Taxi	708-841-0352
Sauk Trail Taxi	708-755-1290
Suburban Cab Co.	708-331-8887
Suburban Taxi and Limo	708-444-4450

TELEGRAMS

American Telegram	800-343-7363
Western Union	800-325-6000

WEATHER 708-976-1212

Chicago Southland Convention & Visitors Bureau
members are in bold.

MILEAGE TO
CHICAGO SOUTHLAND

The Chicago Southland is approximately 22 miles from the City of Chicago's downtown area.

The North

Minneapolis, MN	435
Milwaukee, WI	115
Montreal, Quebec	850
New York, NY	824

The East

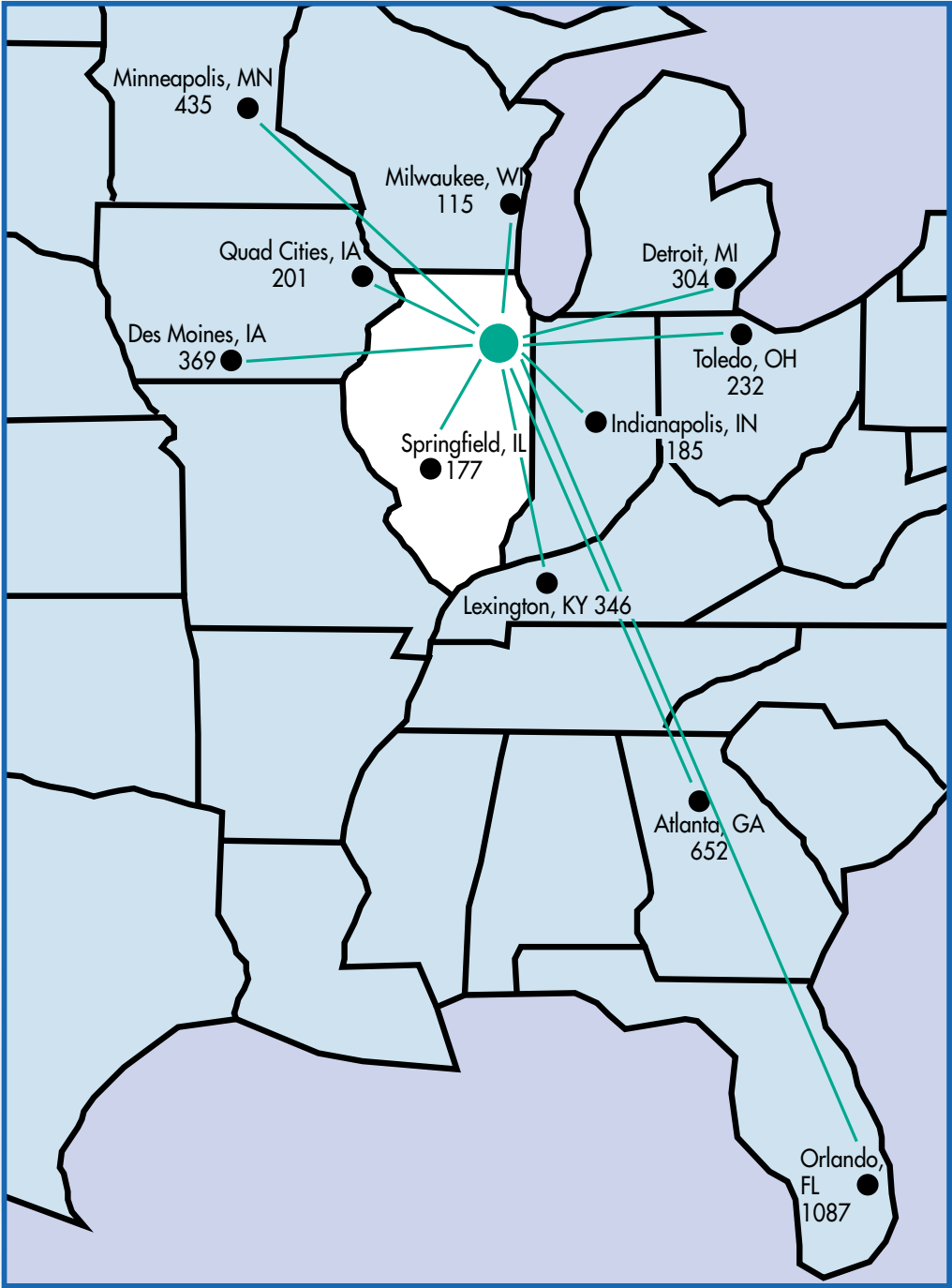
Baltimore, MD	690
Boston, MA	972
Detroit, MI	304
Indianapolis, IN	185
Norfolk, VA	831
Philadelphia, PA	760
Raleigh, NC	806
Toledo, OH	232
Washington, D.C.	693

The West

Boise, ID	1683
Dallas, TX	895
Denver, CO	974
Des Moines, IA	369
Los Angeles, CA	2074
Omaha, NE	481
Phoenix, AZ	1691
Portland, OR	2105
Quad Cities, IA	201
Salt Lake City, UT	1412
San Francisco, CA	2164
Seattle, WA	2035

The South

Atlanta, GA	652
Birmingham, AL	620
Lexington, KY	346
New Orleans, LA	890
Orlando, FL	1087
Springfield, IL	177
St. Louis, MO	264



AVERAGE FLIGHT TIMES
TO CHICAGO SOUTHLAND

(Midway and O'Hare Airports)	
Atlanta, GA	1 hour
Dallas, TX	2 hours 8 minutes
Denver, CO	2 hours
Los Angeles, CA	4 hours
Minneapolis, MN	1 hour 10 minutes
New Orleans, LA	2 hours 15 minutes
New York, NY	1 hour 30 minutes
Orlando, FL	2 hours 15 minutes
San Francisco, CA	4 hours 20 minutes
Washington, D.C.	1 hour 5 minutes

HIGHWAY
NOMENCLATURE

I-55	Adlai E. Stevenson Expressway
I-57	Interstate 57
I-90W	John F. Kennedy Expressway
I-90E	Chicago Skyway
I-94	Dan Ryan Expressway
I-294	Tri-State Tollway
I-355	Veterans Memorial Tollway
I-394	Bishop Ford Freeway

CLIMATE

Month	Average Daily Temperature Max/Min
January	31/16
February	35/20
March	46/29
April	59/39
May	70/49
June	79/58
July	84/64
August	81/62
September	74/54
October	61/43
November	48/32
December	35/21



EVENT SERVICES

The Chicago Southland Convention & Visitors Bureau can assist you in many ways, from site selection through on-site registration. We are your primary source of information for the Chicago Southland region. You can rely on the expertise of our professional staff to assist you in all facets of planning your next event. We offer a variety of FREE professional services to groups *booked through* the CSCVB: Name Badges, Welcome Banners and Table Tents to just name a few. ***Call us today at 888-895-8233!***

Pre-Event Services

The Pre-Event Services are available prior to your event in the Chicago Southland.

Brochure & Video Distribution

A variety of brochures, videos and electronic files for individuals and groups are available upon request to event planners. These brochures contain information on hotels, attractions, cultural organizations, restaurants and activities in the Chicago Southland area.

Convention Suppliers

The Bureau has a list of members representing every facet of the hospitality industry including: audio/visual, transportation, decorators, florists, tour companies, specialty items, etc. Let us introduce you to the local suppliers who can help make your event a success.

Electronic Newsletter

The Bureau can send out an e-news blast to your participants. Information and e-mail addresses (in Excel format) need to be submitted at least 15 business days prior to sending date.

Event Listing

If your event is open to the public, it can be listed in the Chicago Southland Festivals & Events Brochure (if deadline is met). It can also be listed on the Bureau's website, our weekly calendar faxed to hotels, event hotline and social media outlets.

Itinerary Planning

We can help plan your group's itinerary from start to finish. Services include: meal planning, cultural/recreational activities, ground transportation and step-on guides.

Language Services

The Bureau can put you in touch with the appropriate linguistic service resources.

Marketing Assistance

We can assist in the promotion of your event by sending out news releases or supplying you with our media list. The Bureau requires a minimum of 15 business days to accommodate this request. Also, we can provide you with information on how to write a press release of your own. The Bureau can also promote your event through our social media outlets.

Media Kit

Upon request, we can provide you with a media mailing list, area background stories and electronic photos.

Microsite

Clients that book a minimum of 50 total room nights will be eligible for a custom microsite. Each microsite will have its own url and contain information on hotels, attractions, events taking place during their stay, restaurants, a link to the group's website and weather. The Bureau requires a minimum of 60 days to accommodate this request.

Online Reservation Link

If your group requires two or more hotels in the Chicago Southland area, the Bureau can provide a custom url for online reservations.

Pre/Post Tours

We can assist you in planning pre/post tours incorporating Chicago Southland and City of Chicago sites.

Pre-Promotion

Depending on previous event's location, the Bureau can provide a staff member and literature to help promote the Chicago Southland region as the future event site. Restrictions apply.

Save The Date Postcards

Save the Date postcards are available to promote your upcoming Chicago Southland event. They are limited to groups with 100-500 people that have booked through the Bureau with a minimum of 50 total room nights. These postcards are also available electronically.

Site Inspections

The Chicago Southland Convention & Visitors Bureau can provide you with a personal site inspection of hotels, convention center, expo centers, meeting/event facilities and attractions.

Transportation

If you or your group needs transportation services, we will be happy to refer you to a local transportation company.

Unique Meeting Places

If it is an unconventional meeting place you are looking for, we have a list of facilities to accommodate your group. Such facilities include:

- Casinos
- Colleges/Universities
- Comedy Clubs
- Family Entertainment Centers
- Forest Preserves
- Golf Courses/Country Clubs

On-Site Services

On-Site Services are the services available during your event in the Chicago Southland.

Executive Gift Basket

A basket containing Chicago Southland regional items can be presented to the event planner, dignitary or executive of your choice. At least 50 total room nights are required.

Literature

We will provide you with complimentary copies of our printed materials.

- Visitors Guide
- Travelers Map
- Coupon Book
- Festivals & Events Guide
- Public Transportation Brochure

Map Grid

The Bureau will customize a map of the Chicago Southland region by designating your event's hotels/facilities and provide a grid of area hotels and their amenities.



EVENT SERVICES

Name Badges

The Bureau can provide customized name badges with the Chicago Southland logo. The option of sticky or hanging name badges will be complimentary to groups booked through the Chicago Southland Convention & Visitors Bureau. However, there must be a minimum of 50 room nights booked for the Bureau to print attendees' names on the badges. The Bureau requires a minimum of 15 business days to accommodate this request. Names need to be submitted in an Excel format.

Official Greeting

We can arrange for a welcome letter and/or welcome by a local dignitary. The Bureau requires a minimum of 30 days to accommodate this request.

Plastic Bags

The Bureau has plastic bags (12" x 14") available for registration packets or information distribution.

Profile Sheets

Customized profile sheets will be provided to your group upon request. These profile sheets provide important information such as nearby pharmacies, grocery stores, dry cleaners, laundromats, etc. A profile sheet .pdf can also be provided.

Recycle, Reduce, Reuse

With 15 business days notice, the Bureau can coordinate a donation drop off for your event (i.e. eyeglasses, canned food, ink cartridges, cell phones, clothes, etc.)

Registration Assistance

The Bureau can provide registration assistance to all groups booked through the Chicago Southland Convention & Visitors Bureau. This service is based on staff availability. The Bureau requires a minimum of 50 total room nights booked and 30 days advanced notice for this service. There will be a four-hour limit per 50 rooms booked.

Table Tent Cards

Customized table tent cards (8-1/2" x 11" single-fold) are available. The Bureau requires a minimum of 15 business days to accommodate this request.

Welcome Signage

The Bureau can provide you with a customized welcome banner (8' x 3') or signboard (2' x 3') for display at your event with the Chicago Southland Convention & Visitors Bureau logo. Clients can receive either ONE free banner or ONE free signboard if the group has booked a minimum of 50 total room nights. The Bureau requires a minimum of 15 business days to accommodate this request.

Post-Event Services

Post Event Services are the services following your event in the Chicago Southland.

Post-Event Questionnaire

The Bureau can provide a questionnaire template that can be given to your attendees for feedback. This service is available for groups booking a minimum of 50 total room nights.





TOYOTA PARK

Toyota Park Drive
7000 South Harlem Avenue
Bridgeview, IL 60455

Parking Spaces: 6,000
Owned: Publicly
ADA Compliant: Yes
Primary Users: Chicago Fire Soccer Club
Soccer (other sports may be considered)

Soccer

Fields: 3
(one field with seating,
one field is practice with bleachers)
Seating Capacity: 20,000 for soccer
..... 30,000 for concerts
Lights: Yes
Surface Main Field: Grass
Surface Practice Field: Grass
Surface Practice Field: Artificial Turf
Irrigation System: Yes
Dimensions: 120 yds x 75 yds
Entrances: 6
Ticket Booths: 1 Booth
with 12 windows and Gate B ticket booths
Locker Rooms: 2 locker rooms
that can be partitioned to 4 individual rooms
Electronic Scoreboards: 3
Press Box: Yes
Press Box Seating Capacity: 40
Press Box Phone Lines: 40
Press Box Electronic Media Booths: Yes
Public Address System: Yes
Concession Stands: 11
Restrooms: 9 Male/7 Female



Standard Bank Stadium

14011 South Kenton Avenue
Crestwood, IL 60445

Parking Spaces: 1,800

Owned: Publicly

ADA Compliant: Yes

Primary Users: Windy City ThunderBolts, the frontier league of professional baseball

Baseball, Softball



Baseball

Fields: 1

Seating Capacity: 2,598 + 1,000
..... table seating/Standing Room Only

Lights: Yes

Surface: Grass

Grass Infield: Yes

Outfield Fence: Yes

Dimensions from Home Plate:

Left Field 330'

Left Center Field 365'

Center Field 390'

Right Center Field 365'

Right Field 330'

Covered Dugouts: Yes

Protected Dugouts: Yes

Entrances: 2

Ticket Booths: 3

Locker Rooms: 2

Electronic Scoreboards: 1

Press Box: Yes

Seating Capacity of Press Box: 50

Phone Lines in Press Box: 3

Electronic Media Booths: Yes

Public Address System: Yes

Concessions: 3

Restrooms: 3 Male/3 Female

Batting Cages: Yes - 2

Bullpen Areas: Yes



Memorial Park Fields

14500 South Homan
Midlothian, IL 60445

Parking Spaces: 80

Owned: Publicly

ADA Compliant: Yes

Primary Users: Youth Baseball/Softball and
Adult Baseball/Softball



Softball

Number of Fields:..... 5

Lights Yes

Surface:..... Grass

Skinned Infield:..... Yes

Outfield Fence:..... Yes

Dimensions from Home Plate:

Left Field: 300

Center field: 301

Right Field: 300

Covered Dugouts:..... Yes

Protected Dugouts:..... No

Ticket Booths:..... No

Locker Rooms:..... No

Number of Electronic Scoreboards:..... 0

Press Box:..... No

Public Address System:..... No

Number of Concession Stands:..... 1

Restrooms 1 Female/1 Male

Batting Cages:..... Yes

Bullpen Areas:..... No



Homewood-Flossmoor Racquet & Fitness Club

2920 West 183rd Street
Homewood, IL 60430

Parking Spaces: 247

Owned: Publicly

ADA Compliant: Yes

Primary Users: Members

Boxing, Fencing, Fitness, Gymnastics, Martial Arts, Racquet Sports, Running/Walking, Soccer, Water Sports, Events for Special Populations



Tennis

Courts:10 (Indoor)

Seating Capacity: 300
(through Lobby and Lounge)

Lights: Yes

Surface: Indoor Hard Courts

Cracks in Surface: No

Entrances: One main entrance & fire exits

Ticket Booths: One service desk

Locker Rooms: 1 Male/1 Female

Electronic Scoreboards: None

Public Address System: Yes

Concession Stands: 1

Restrooms: 1 Male/1 Female



Hallmark Sports Club

10850 Laraway Road
Frankfort, IL 60423

Parking Spaces: 100

Owned: Privately

Owned By: Ronald Bergstrom

Primary Users of Facility: Sportsclub Indoor
Soccer League, Ultimate Volleyball Club, Chicago
Magic Soccer Club

ADA Compliant: No

Basketball, Martial Arts, Soccer, Volleyball



Gymnasium/Fieldhouse

Seating Capacity: 300
Gymnasiums: 2
Floor Surface: Sport Court
Type of Backboards: Plexiglass
Air Conditioning: No
Basketball Courts: 1
Dimensions: Standard
Dimensions of Gymnasium Floor: 170' x 80'
Ceiling Height: 30'
Shot Clocks: No
Entrances: 3
Ticket Booths: No
Locker Rooms: No
Scoreboards: 1
Scorer's Table: Yes
Seating Capacity of Scorer's Table: 2
Phone lines at Scorer's Table: No
Public Address System: No
Concession Stands: 1
Restrooms: 1 Male/1 Female

Soccer (Indoor)

Seating Capacity: 300
Surface: Astroturf
Air Conditioning: No
Dimensions of Field: 185' x 85'
Ceiling Height: 30'
Entrances: 3
Ticket Booths: No
Locker Rooms: No
Scoreboards: 1
Scorer's Table: Yes
Seating Capacity of Scorer's Table: 2
Phone lines at Scorer's Table: No
Public Address System: No
Concession Stands: 1
Restrooms: 1 Male/1 Female

Soccer (Outdoor)

Lights: No
Surface: Natural Grass
Irrigation System: No
Entrances: Open Area
Ticket Booths: No
Locker Rooms: No
Electronic Scoreboards: No
Press Box: No
Public Address System: No
Concession Stands: No
Restrooms: 1 Male/1 Female

Stadium Field

Seating Capacity: 300
Dimensions: 110 yds x 70 yds
Field 2
Seating Capacity: 0
Dimensions: 110 yds x 70 yds
Field 3
Seating Capacity: 0
Dimensions: 100 yds x 60 yds

Matteson Community Center

20642 Matteson Avenue
Matteson, IL 60443

Parking Spaces: 150+

Owned: Publicly

ADA Compliant: Yes

Primary Users: General Public

Badminton, Baseball, Basketball, Dodgeball,
Football, Lacrosse, Martial Arts, Pickleball,
Soccer, Softball, Swimming, Tennis, Track,
Volleyball and Wrestling.

**Baseball**

Number of Fields:2 (youth)
Lights:Yes
Surface (type):Grass
Grass Infield:Yes
Outfield Fence:Yes
Dimensions from Home Plate:
Left Field:205
Left Center:200
Center Field:200
Right Center:200
Right Field:205
Covered Dugouts:No
Protected Dugouts:No
Ticket Booths:No
Locker Rooms:Yes
Number of Electronic Scoreboards:
.....1 on each field
Press Box:Yes
Public Address System:Yes
Number of Concession Stands:1
Restrooms:Yes
Batting Cages:Yes
Bullpen Areas:Yes

Basketball: Gymnasium/Fieldhouse

Seating Capacity:999
Number of Gymnasiums:2
Floor Surface (type):Wood
Type of Backboards:Glass
Air Conditioning:Yes
Number of Basketball Courts:6
(4 youth, 2 adult)
Dimension of Each Court:High School
Ceiling Height:40 ft
Shot Clocks:Yes
Number of Entrances:2
Ticket Booth:No
Locker Rooms:No
Number of Scoreboards:2
Scorer's Table:Yes
Seating Capacity of Scorer's Table:6
Phone Lines at Scorer's Table:No
Public Address System:Yes
Number of Concession Stands:1
Restrooms:Yes

Football

Seating Capacity:500
Surface (type):Natural
Irrigation System:Yes
Number of Entrances:1
Ticket Booths:No
Locker Rooms:No
Number of Scoreboards:1
Press Box:No
Public Address System:Yes
Restrooms:Yes
Practice Field:No

Soccer

Number of Fields:3
(2 youth, 1 adult)
Seating Capacity:40
Lights:Yes
Surface (type):Grass
Dimensions:Youth
Number of Entrances:1
Ticket Booths:No
Locker Rooms:No
Number of Electronic Scoreboards:0
Public Address System:Yes
Number of Concession Stands:1
Restrooms:Yes

Softball

Number of Fields:5
(2 youth, 3 adult)

Lights:Yes
(on 2 youth fields)

Surface:Dirt

Skinned Infield:Yes

Outfield Fence:Yes (1) no (4)

Dimensions from Home Plate

Left Field:200

Center Field:205

Right Field:200

Covered Dugouts:Yes

Protected Dugouts:Yes

Ticket Booths:No

Locker Rooms:No

Number of Electronic Scoreboards: Yes (1) No (4)

Press Box:Yes (1) No (4)

Public Address System:Yes

Number of Concession Stands:1

Restrooms:Yes

Batting Cages:Yes

Bullpen Areas:Yes (1) No (4)

Swimming

Seating Capacity:500

Dimensions:25 yards

Depth:5 ft

Number of Lanes:6+

Practice Pool:Yes

Diving:No

Ticket Booths:No

Locker Rooms:Yes

Electronic Scoreboards:Yes

Public Address System:Yes

Number of Concession Stands:1

Restrooms:Yes

Tennis

Number of Courts:3 (all outdoor)

Seating Capacity:None

Lights:Yes

Surface (type):Hard Court

Cracks in Surface:No

Ticket Booths:No

Locker Rooms:Yes

Public Address System:Yes

Number of Concession Stands:No

Restrooms:Yes

Track (Outdoor)

Seating Capacity:500

Lights:Yes

Surface:Asphalt

Number of Lanes:6+

Distance:¼ mile

Markings:High School

Track can accommodate: shot put, discus,
long jump, high jump, pole vault,
hammer throw

Ticket Booths:No

Locker Rooms:No

Press Box:No

Public Address System:Yes

Number of Concession Stands:1

Warm up Area:No

Other fields and facilities are available in the Village of Matteson.



Palos Courts

12221 South Ridgeland Avenue
Palos Heights, IL 60463

Parking Spaces: 180

Owned: Privately

Primary Users: Volleyball Clubs

ADA Compliant: No

Basketball, Tennis, Volleyball



Gymnasium

Seating Capacity:	1,200
Gymnasiums:	1
Floor Surface:	Sport Court
Type of Backboards:	Glass
Air Conditioning:	Yes
Basketball Courts:	2
Dimensions of Each Court:	90' X 50'
Dimensions of Gymnasium Floor:	2 @ 120' x 150'
Ceiling Height:	40'
Shot Clocks:	Yes
Volleyball Courts:	6
Dimension of Each Court:	96' x 50'
Entrances:	1
Ticket Booths:	No
Locker Rooms:	2
Scoreboards:	2
Scorer's Table:	Yes
Seating Capacity of Scorer's Table:	4
Phone Lines at Scorer's Table:	No
Public Address System:	No
Concession Stands:	1
Restrooms:	2 Male/2 Female

Tennis

Courts:	3
Seating Capacity:	100
Lights:	Yes
Surface:	Hard
Cracks in Surface:	No
Entrances:	2
Ticket Booths:	No
Locker Rooms:	2
Electronic Scoreboards:	2
Public Address System:	No
Concession Stands:	1
Restrooms:	2 Male/2 Female

Ho-Chunk

Ho-Chunk Sports & Expo Center

10 Southland Drive
Lynwood, IL 60411

Parking Spaces: 1,200

Owned: Privately

ADA Compliant: Yes

Cheerleading, Dancing, Football, Martial Arts,
Soccer

The Ho-Chunk Sports and Expo
Center offers:

- 3 Indoor Soccer Fields
- 17,000 sq. ft. Special Events Room
- 7,000 sq. ft. Sports Lounge
- 4,000 sq. ft. Concession
- Family Arcade
- 3 Banquet Rooms

- Can hold Cheerleading/Dancing, Martial Arts and Football practices
- 3 Indoor soccer fields currently turn into 1 big indoor field during the summer.

Soccer

Fields: 3 (Indoor)
Seating Capacity: 1,000+ Bleacher Seating
Lights: Yes
Surface: Artificial
Dimensions: 185' x 85' & 137' x 61'
Entrances: 4
Ticket Booths: 2
Locker Rooms: 6 Male/6 Female
Concession Stands: 1
Restrooms: 3 Male/3 Female



SPORTS FACILITIES



Arctic Ice Arena

10700 West 160th Street
Orland Park, IL 60467

Parking Spaces: 276

Owned: Privately

Primary Users: Hockey Teams

ADA Compliant: Yes

Ice Hockey, Ice Skating



Area
2

Type of Lighting: Various
Arcade: Yes
Locker Rooms: 14
Concession Stands: Yes
Vending Machines: Yes
Pro Shop: Yes
Meeting/Banquet Rooms: Yes
Bar & Grill Yes

Arena	Sheet Dimensions	Seating Capacity	North American Standard	International Standard
Arena 1	85' x 200'	500	Yes	No
Arena 2	85' x 200'	370	Yes	No
Arena 3	100' x 200'	500	No	Yes



Homewood-Flossmoor Ice Arena

777 Kedzie Avenue
Flossmoor, IL 60430

Parking Spaces: 400+

Owned: Publicly

Primary Users: Figure Skaters, Hockey
Players, General Public

ADA Compliant: Yes

Ice Hockey, Ice Skating



Area
3

Type of Lighting: Fluorescent
Arcade: No
Locker Rooms: 6
Concession Stands: Yes
Vending Machines: Yes
Pro Shop: Yes
Meeting/Banquet Rooms: Yes
Dimensions: 30' x 24'

Arena	Sheet Dimensions	Seating Capacity	North American Standard	International Standard
Main Rink	85' x 200'	1,200	Yes	No
Studio Rink	90' x 40'	viewing from Lobby	No	No

SPORTS FACILITIES



Oak Lawn Ice Arena

9320 South Kenton Avenue
Oak Lawn, IL 60453

Parking Spaces: 250

Owned: Publicly

Primary Users: Hockey, Figure Skaters

ADA Compliant: Yes

Ice Hockey, Figure Skating, Public Skating



Area
1

Type of Lighting: 1,000 Watt Sodium Vapor
Arcade: Yes
Locker Rooms: 4
Concession Stands: Yes
Vending Machines: Yes
Pro Shop: No
Meeting/Banquet Rooms: Yes
Dimensions: 46' x 31'
..... 25' x 29'

Arena	Sheet Dimensions	Seating Capacity	North American Standard	International Standard
1	100' x 200'	1,200	No	Yes



Southwest Ice Arena

5505 127th Street
Crestwood, IL 60445

Parking Spaces: 150

Owned: Privately

Primary Users: Hockey Teams, Public
Skating, Skating Lessons

ADA Compliant: Yes

Figure Skating, Ice Hockey, Ice Skating



Area
2

Type of Lighting: High Output T8
Arcade: Yes
Locker Rooms: 4
Concession Stands: Yes
Vending Machines: Yes
Pro Shop: No
Meeting/Banquet Rooms: Yes
Dimensions: 18' x 20'

Arena	Sheet Dimensions	Seating Capacity	North American Standard	International Standard
Arena 1	85' x 200'	1,000	Yes	No
Arena 2	40' x 80'	100	No	No



Chicago Gaelic Park

6119 West 147th Street
Oak Forest, IL 60452

Parking Spaces: 1,000

Owned: Privately

Primary Users: Gaelic Athletic Association

ADA Compliant: Yes

Gaelic Sports, Rugby, Soccer (other sports may be considered)



Soccer

Fields: 6

Seating Capacity: 2,000

Lights: Yes (Not for playing)

Surface: Grass

Irrigation System: Yes

Dimensions: 65 acres

Entrances: 2

Ticket Booths: 1

Locker Rooms: 4

Electronic Scoreboards: No

Press Box: Yes

Seating Capacity of Press Box: 6

Phone Lines in Press Box: No

Public Address System: Yes

Concession Stands: 1

Restrooms: 5 Male/5 Female



Prairie State College

Prairie State College

202 South Halsted Street
Chicago Heights, IL 60411

Owned: Publicly (baseball, soccer, softball fields) / Privately (gymnasium)

Primary Users: College, St. James Health and Wellness Institute Club Members

Baseball, Basketball, Soccer, Softball, Tennis,
Volleyball

Baseball

Fields:	1
Seating Capacity:	75
Lights:	No
Surface:	Grass
Grass Infield:	Yes
Outfield Fence:	Yes
Dimensions from Home Plate:	
Left Field	307'
Left Center	371'
Center Field	405'
Right Center	371'
Right Field	307'
Covered Dugouts:	Yes
Protected Dugouts:	No
Entrances:	1
Ticket Booths:	No
Locker Rooms:	No
Electronic Scoreboards:	1
Press Box:	No
Public Address System:	No
Concession Stand:	1
Restrooms:	No
Batting Cages:	No
Bullpen Areas:	Yes

Basketball: Gymnasium/ Fieldhouse

Seating Capacity:	880
Gymnasiums:	1
Floor Surface:	Wood
Type of Backboards:	Glass
Air Conditioning:	Yes
Basketball Courts:	2
Dimensions of Each Court:	
	1 Full Court or 2 Half Courts
Ceiling Height:	35'
Shot Clocks:	Yes
Entrances:	1
Ticket Booth:	No
Locker Rooms:	2
Scoreboards:	2
Scorer's Table:	Yes
Seating Capacity of Scorer's Table:	4
Phone Lines at Scorer's Table:	No
Public Address System:	Yes
Concession Stand:	1
Restrooms:	1 Male / 1 Female



Soccer

Fields:	2 (1 game, 1 practice)
Seating Capacity:	100
Lights:	No
Surface:	Grass
Dimensions:	College
Entrances:	1
Ticket Booths:	No
Locker Rooms:	No
Electronic Scoreboards:	1
Public Address System:	No
Concession Stand:	1
Restrooms:	No

Softball

Fields:	1
Seating Capacity:	75
Lights:	No
Surface:	Grass
Skinned Infield:	Yes
Outfield Fence:	Yes
Dimensions from Home Plate:	
Left Field	195'
Center Field	205'
Right Field	195'
Covered Dugouts:	Yes
Protected Dugouts:	No
Entrances:	1
Ticket Booths:	No
Locker Rooms:	No
Electronic Scoreboards:	1
Press Box:	No
Public Address System:	No
Concession Stand:	1
Restrooms:	No
Batting Cages:	No
Bullpen Areas:	Yes

Tennis

Courts:	6
Seating Capacity:	50
Lights:	No
Surface:	Hard Court
Cracks in Surface:	Yes
Entrances:	1
Ticket Booths:	No
Locker Rooms:	No
Electronic Scoreboards:	No
Public Address System:	No
Concession Stand:	No
Restrooms:	No

Volleyball: Gymnasium/Fieldhouse

Seating Capacity:	880
Gymnasiums:	1
Floor Surface:	Wood
Air Conditioning:	Yes
Volleyball Courts:	2
Dimensions of Each Court:	College
Ceiling Height:	35'
Entrances:	1
Ticket Booth:	No
Locker Rooms:	2
Scoreboards:	2
Scorer's Table:	Yes
Seating Capacity of Scorer's Table:	4
Phone Lines at Scorer's Table:	No
Public Address System:	Yes
Concession Stand:	1
Restrooms:	1 Male / 1 Female



Saint Xavier

UNIVERSITY

Saint Xavier University

3700 West 103rd Street
Chicago, IL 60665

Parking Spaces: 1,250

Owned: Privately (Saint Xavier University)

Primary Users: Students

ADA Compliant: Yes

Baseball, Basketball, Football, Soccer



Baseball

Fields:	1
Seating Capacity:	300
Lights:	No
Surface:	Grass
Grass Infield:	Yes
Outfield Fence:	Yes
Dimensions from Home Plate	
Left Field	330'
Left Center Field	375'
Center Field	400'
Right Center Field	375'
Right Field	330'
Covered Dugouts:	Yes
Protected Dugouts:	Yes
Entrances:	1
Ticket Booths:	No
Locker Rooms:	No
Scoreboards:	1
Public Address System:	No
Concession Stands:	No
Restrooms:	No
Batting Cages:	Yes
Bullpen Areas:	No

Football

Seating Capacity:	3,000
Surface:	Turf
Irrigation System:	Yes
Entrances:	2
Ticket Booths:	Yes
Locker Rooms:	Yes
Scoreboards:	1
Press Box:	Yes
Seating Capacity of Press Box:	12
Number of Press Box Phone Lines:	2
Public Address System:	Yes
Concession Stands:	Yes
Restrooms:	Yes
Practice Field:	Yes

Gymnasium/Fieldhouse

Seating Capacity:	2,700
Gymnasiums:	2
Floor Surface:	Wood
Type of Backboards:	Glass
Air Conditioning:	Yes
Basketball Courts:	4
Dimensions of Each Court:	70' x 114'
Dimensions of Gymnasium Floor:	114' x 131'
Ceiling Height:	40'
Shot Clocks:	Yes
Entrances:	2
Ticket Booths:	No
Locker Rooms:	2
Scoreboards:	2
Scorer's Table:	Yes
Seating Capacity of Scorer's Table:	6
Phone Lines at Scorer's Table:	1
Electronic Media Booth:	Yes
Public Address System:	Yes
Concession Stands:	4
Restrooms:	3 Male/3 Female

Soccer

Fields:	2 (1 game, 1 practice)
Seating Capacity:	3,000+
Lights:	No
Surface:	Turf
Irrigation System:	Yes
Dimensions of Field:	Football Field
Entrances:	2 (1 attendees, 1 staff)
Ticket Booths:	2
Locker Rooms:	2
Electronic Scoreboards:	1
Press Box:	Yes
Seating Capacity of Press Box:	12
Phone Lines in Press Box:	2
Electronic Media Booth:	No
Public Address System:	Yes
Concession Stands:	1
Restrooms:	Yes

Softball

Fields:	1
Seating Capacity:	200
Lights:	No
Surface:	Natural
Skinned Infield:	Yes
Outfield Fence:	Yes
Dimensions from Home Plate:	
Left Field	190'
Left Center Field	205'
Center Field	215'
Right Center Field	205'
Right Field	190'
Covered Dugouts:	Yes
Protected Dugouts:	Yes
Entrances:	1
Ticket Booths:	No
Locker Rooms:	No
Electronic Scoreboards:	Yes
Press Box:	No
Public Address System:	Yes
Restrooms:	No
Batting Cages:	Yes
Bullpen Areas:	No



Tinley Park Convention Center
18451 Convention Center Drive
Tinley Park, IL 60477

Guest Rooms: 202
Meeting Rooms: 18



Tinley Park Convention Center's Massive Expansion and Remodel is COMPLETE!

This unique facility is nestled in the heart of Chicago Southland just 30 minutes south of Chicago; located at Interstate 80 and Harlem Avenue North, Exit 148B with easy access to interstates including I-57, I-294, I-90/94, I-394, I-55 and I-355. This Tinley Park Convention Center is only minutes to nearby shopping, one mile from the First Midwest Bank Amphitheatre, 20 minutes from Midway Airport and 40 minutes from O'Hare International Airport.

The Expanded Tinley Park Convention Center features...

A total of 130,000 square feet ensuring Tinley Park's position as the largest and most modern Convention Center in the Chicago Southland...

- 58,000 square feet of net contiguous exhibition space and over 70,000 square feet of banquet and meeting space.
- Meeting space will include 18 "breakout" rooms ranging in size from 700 square feet to 2,000 square feet.
- Fully equipped business center
- 30' high waterfalls in the lobby
- State-of-the-art high speed internet access and audio visual equipment.
- 1,300 FREE parking spaces on the Hotel and Convention Center grounds

Here are just a few reasons to choose Tinley Park Convention Center for your next convention, trade or consumer show or social event!

- Attached Holiday Inn Headquarters Hotel with 202 deluxe guest rooms, luxurious whirlpool suites; All guest rooms are equipped with microwave, refrigerator, iron, ironing board, hair dryer, coffeemaker and wireless internet access
- Tinley Park Convention Center is the largest meeting venue in Chicago Southland.
- Outstanding dining in Bananas Grille & Bar (adjacent to hotel) serving breakfast, lunch and dinner
- 24-hour business center
- Close to championship golf courses
- Historic downtown Tinley Park nearby
- Downtown Chicago – 30 minutes
- Area attractions: First Midwest Bank Amphitheatre, Odyssey Fun World, Riverboat Casinos and Chicagoland Speedway

With a commitment of superior service to every visitor, combined with a convenient location and flexible exhibition space, this facility guarantees that your event will be a success. Whether you are planning your dream wedding, a small meeting, social function, convention, seminars or a large trade show, our attention to detail will make every aspect of your visit flow smoothly.



ROOM	DIMENSIONS	SQ. FEET	BANQUET	CLASSROOM	THEATRE	RECEPTION	CEILING	10'x10'	8'x10'
Convention Center	varies	58,100	3,000	2,350	5,850	8,700	35'	338	392
Exhibit North	95'x120'	11,400	580	475	1,150	1,400	35'	58	76
Exhibit West	varies x120'	10,800	550	450	1,100	1,800	35'	52	65
Exhibit South	134'x132'	17,700	1,000	725	1,900	2,550	27'	103	122
South Pavilion	120'x138'	16,560	870	675	1,700	2,000	14'	97	110
South Pavilion Ballroom	96'x120'	11,500	600	540	1,150	1,400	14'	63	67
South Pavilion #1	40'x96'	3,840	210	180	405	300	14'	18	25
South Pavilion #2	40'x96'	3,840	210	180	405	300	14'	18	25
South Pavilion #3	24'x40'	960	50	45	100	125	14'	n/a	n/a
South Pavilion #4	24'x40'	960	50	45	100	100	14'	n/a	n/a
South Pavilion #5	24'x40'	960	50	45	100	100	14'	n/a	n/a
South Pavilion #6	24'x40'	960	50	45	100	75	14'	n/a	n/a
North Pavilion Ballroom	73'x98'	7,150	390	335	750	930	18'	40	50
North Pavilion #1	24'x38'	910	50	42	95	120	18'	n/a	n/a
North Pavilion #2	24'x38'	910	50	42	95	120	18'	n/a	n/a
North Pavilion #3	24'x38'	910	50	42	95	120	18'	n/a	n/a
North Pavilion #4	24'x36'	860	50	40	80	110	18'	n/a	n/a
North Pavilion #5	24'x36'	860	50	40	80	110	18'	n/a	n/a
North Pavilion #6	24'x36'	860	50	40	80	110	18'	n/a	n/a
South Suite	12'x21'	250	n/a	n/a	n/a	n/a	10'	n/a	n/a
Samuel Tinley	21'x42'	912	50	40	80	125	10'	n/a	n/a
West Suite	11'x19'	209	n/a	n/a	n/a	n/a	10'	n/a	n/a
Bremen	20'x40'	800	50	33	80	100	10'	n/a	n/a
Pebble Beach	25'x28'	700	40	36	60	80	12'	n/a	n/a
St. Andrew	25'x28'	700	40	36	60	80	12'	n/a	n/a
Muirfield	25'x28'	700	40	36	60	80	12'	n/a	n/a
Turnberry	25'x28'	700	40	36	60	80	12'	n/a	n/a
Executive Board Room	15'x21'	315	n/a	n/a	n/a	n/a	12'	n/a	n/a



Hilton Chicago/Oak Lawn & Conference Center

Cicero Avenue at 94th Street
9333 South Cicero Avenue
Oak Lawn, IL 60453

Meeting Rooms: 20

Guest Rooms: 184

New Style – New Look

The New Hilton Oak Lawn

The Hilton Chicago/Oak Lawn & Conference Center is located 4 miles South of Chicago's Midway Airport in the heart of a city with numerous shops, dining choices and entertainment attractions. Whether you are attending a business meeting, held in one of our 18 meeting rooms or sharing one of your friends' or family's most special moments, you will find all the comforts of home with style and sophistication.

Accommodations

- 184 guestrooms and suites have been redesigned to enhance the business or leisure traveler's experience
- 32" flat screen HDTV, MP3 alarm clock
- Hilton HHonors® Floors and Executive Lounge with scenic views of Chicagoland
- Atrium enclosed indoor pool, whirlpool and fitness center featuring PRECOR® Fitness Equipment
- Parking is complimentary

Meeting Space

- 20,000 square feet of functional meeting and banquet space
- Grand Ballroom is 6,000 square feet and can be divided into 4 separate rooms
- 8 multi-functional rooms, all located on the main level
- The magnificent 4,000 sq. ft. Astoria Ballroom featuring a built-in bar and dance floor
- 2 new eco-friendly, luxury meeting rooms, the "Hilton® Executive Boardroom" and the "Hilton® Multi-purpose Room"
- Participating in the Stay Connected® Program with Hilton to include complimentary wireless high-speed Internet throughout the facility

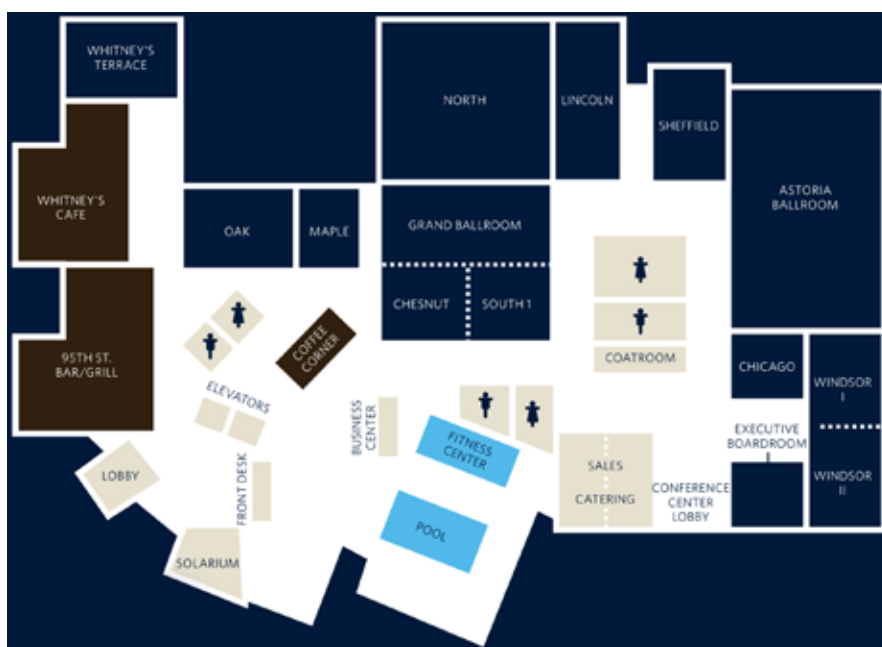
Dining

- Whitney's Café - Our traditional and award-winning restaurant for "Best Service" and "Best Restaurant" in the Chicago Southland area, is the area's favorite for Breakfast, Lunch, Dinner and Sunday Brunch
- 95th St. Bar & Grill - The perfect place to relax and catch the latest sports score on our multiple flat screens. Look no further than the hotel's hottest addition with an intimate, sleek and sassy atmosphere
- Hilton Coffee Corner offers Starbucks® specialty coffee and drinks with bakery and sandwich selections
- In Room Dining Service, 24 hours a day, featuring all of Whitney's favorite items

Airport and Transportation

Hilton Chicago/Oak Lawn & Conference Center offers complimentary shuttle service to and from Midway Airport, the local Metra Station and Orange Line. We are also pleased to offer complimentary transportation to and from area businesses within a 5 mile radius of the hotel.





ROOM	DIMENSIONS	SQ. FEET	BANQUET	CLASSROOM	THEATRE	RECEPTION	CEILING	10'x10'	8'x10'
Grand Ballroom	56'x107'	5,992	550	400	800	1,000	12'	n/a	46
North	56'x53'	2,968	250	200	350	500	12'	n/a	n/a
Center	56'x26'	1,456	120	100	140	250	12'	n/a	n/a
South	56'x26'	1,456	120	100	140	250	12'	n/a	n/a
South 1	28'x26'	728	63	50	70	120	12'	n/a	n/a
Chestnut	28'x26'	728	63	50	70	120	12'	n/a	n/a
Lincoln	23'x43'	989	80	70	100	125	10'	n/a	10
Astoria Ballroom	50'x80'	4,000	350	275	500	750	12'	n/a	30
Windsor	25'x65'	1,625	150	110	200	300	10'	n/a	20
Windsor I & II	25'x32.5'	812.5	75	50	85	150	10'	n/a	n/a
Sheffield	38'x25'	950	60	40	65	120	10'	n/a	n/a
Chicago	23'x24.5'	563.5	40	30	50	75	10'	n/a	n/a
Executive Board Room	23'x24.5'	563.5	40	30	50	75	10'	n/a	n/a
Ivy/Oak	27'x36'	972	60	60	80	100	10'	n/a	n/a
Maple	27'x20'	540	40	30	50	75	10'	n/a	n/a
Terrace	25'x23'	575	50	25	60	75	8'	n/a	n/a

**Doubletree by Hilton Chicago-Alsip**

5000 West 127th Street
Alsip, IL 60803

Meeting Rooms: 13**Guest Rooms: 193**

The hotel is situated south of Chicago's Midway Airport. A short drive to downtown Chicago, Navy Pier, Museums, United Center, Art Institute, and shopping on the Magnificent Mile. The hotel offers convenient access to all the metropolitan

Chicago area via I-294 Tri-State Tollway or choose easy service through any of the Metra train stations nearby.

**MEETING FACILITIES & SERVICES**

15,000 Square feet of flexible meeting and banquet space. Thirteen meeting rooms, including the Grand Ballroom and The Woods, accommodating up to 600 guests. We offer a complete banquet and conference services staff and audio/visual team.

FACILITIES & SERVICES

193 GUEST ROOMS (5 suites). Non-smoking and handicapped accessible rooms available. ADA & FEMA approved facility. Complimentary local area shuttle service. Complimentary parking. State-of-the-art business center. Multi-lingual staff. Same-day valet dry cleaning & laundry. Gift shop.

ALL ROOMS & SUITES FEATURE

High-Speed Internet Access and remote guestroom printing. Bedroom with king or two double beds (featuring the Sweet Dreams by Doubletree bedding program). Two-line telephone with voicemail and data port. Coffeemaker with complimentary coffee and tea. USA TODAY delivered each weekday morning. 25" cable TV with pay-per-view movies and complimentary HBO. Iron and ironing board. Hairdryer. Individual climate control. Electronic door locks.

DINING & ENTERTAINMENT

In-Room Dining, Allgauer's Restaurant, Spotlight Lounge.

RECREATION

Heated indoor swimming pool. Fully-equipped fitness center. Golf course, putting green, tennis courts, hiking trail and horseback riding nearby.

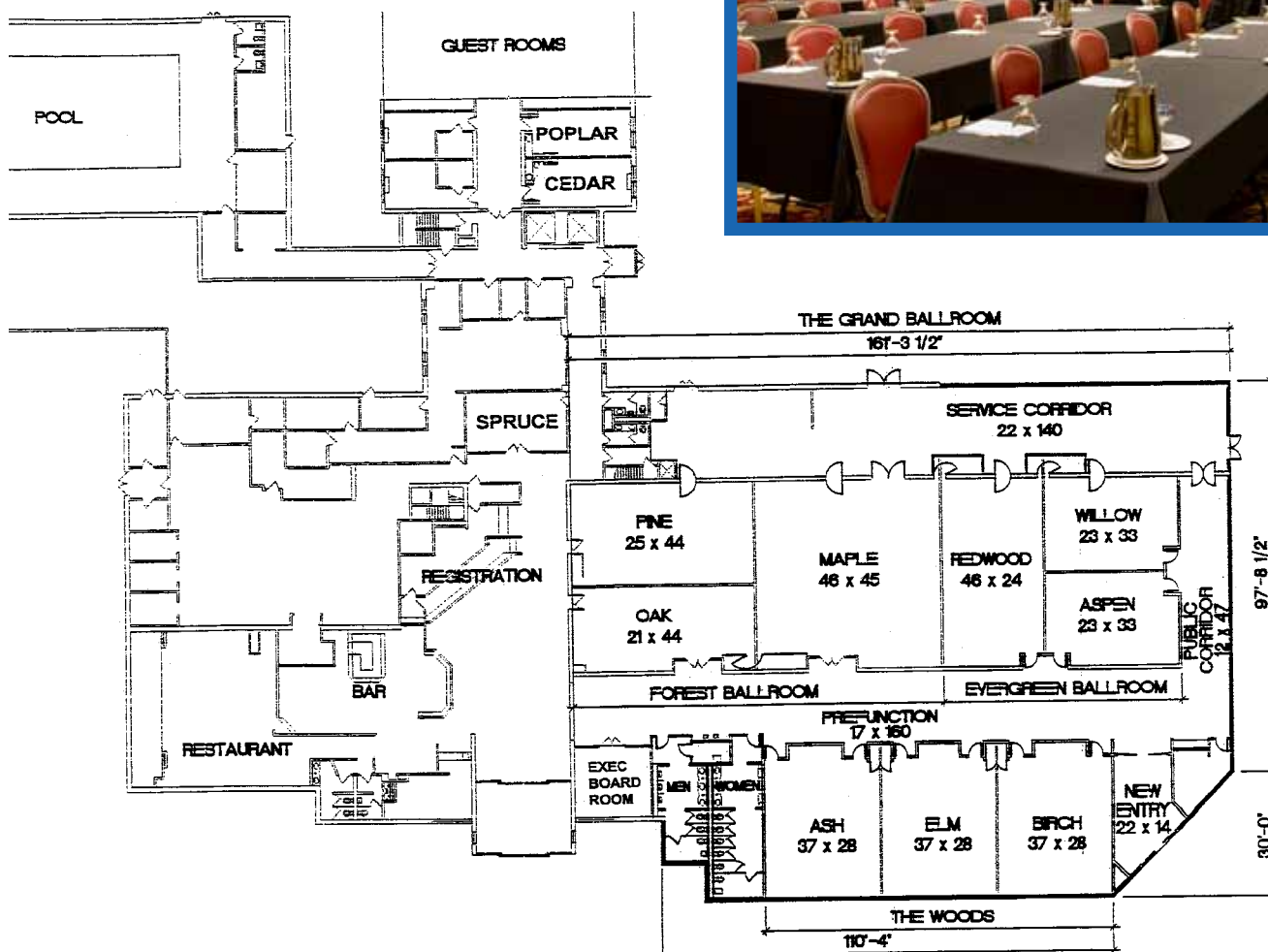
SURROUNDING ATTRACTIONS

Westfield Shopping Town-Chicago Ridge, 5 miles. Midway Airport, 8 miles. Performing Arts Center, 8 miles. First Midwest Bank Amphitheater, 8 miles. Casino Boats, 10 miles. TOTOYA PARK, 5 miles. Soldier Field, 18 miles. Downtown Chicago, 20 miles. Brookfield Zoo, 20 miles. Chicagoland Speedway, 20 miles. Navy Pier, 20 miles. O'Hare Airport, 22 miles. Wrigley Field, 25 miles.

HILTON HHONORS

Hilton HHonors is the only hotel guest reward program that lets you earn both hotel points and airline miles for the same stay at more than 2,700 hotels worldwide. With the Hilton HHonors Event Planner program, Event Planners can earn Points & Miles for qualifying events. Ask your sales person for details.

Warm chocolate chip cookies await you at over 160 Doubletree locations in the USA, Canada and Latin America.



ROOM	DIMENSIONS	SQ. FEET	BANQUET	CLASSROOM	THEATRE	RECEPTION	CEILING	10'x10'	8'x10'
Grand Ballroom	146'x46'	6,716	600	400	800	600	12'	44	44
Forest Ballroom	89'x46'	4,094	320	225	400	320	12'	28	28
Pine Room	44'x25'	1,100	60	32	50	60	12'	n/a	n/a
Oak Room	44'x21'	924	60	40	60	60	12'	n/a	n/a
Maple Room	45'x46'	2,070	150	125	180	150	12'	n/a	n/a
Evergreen Ballroom	57'x46'	2,622	180	170	300	180	12'	16	16
Willow Room	33'x24'	792	50	40	50	50	12'	n/a	n/a
Aspen Room	33'x22'	726	40	36	50	40	12'	n/a	n/a
Redwood	24'x46'	1,104	80	48	70	80	10'	n/a	n/a
The Woods Ballroom	84'x34'	2,856	240	144	260	215	10'	12	12
Ash Room	28'x34'	952	64	40	50	64	10'	n/a	n/a
Elm Room	28'x34'	952	64	40	50	64	10'	n/a	n/a
Birch Room	28'x34'	952	64	40	50	64	10'	n/a	n/a
Spruce Room	24'x14'	336	24	12	30	24	10'	n/a	n/a
Poplar Room	25'x12'	300	16	12	30	16	10'	n/a	n/a
Cedar Room	25'x12'	300	16	12	30	16	10'	n/a	n/a
Executive Boardroom	18'x14'	252	n/a	n/a	12	n/a	10'	n/a	n/a



Georgios Banquets Comfort Inn & Conference Centre

Georgios Banquets Comfort Inn & Conference Centre

8800 West 159th Street
Orland Park, IL 60462

Meeting Rooms: 11
Guest Rooms: 160

Georgios Banquets, Comfort Inn and Conference Centre...a unique experience in luxury lodging and exquisite banquet dining. Rooms are available to suit the smallest board meetings to the grandest banquets, seating up to 1,200 people. The Comfort Inn lobby area is a two-story glass atrium featuring a spiral staircase and florals. The property features 160 newly renovated standard sleeping rooms, with 28 suites, 22,000 square feet of flexible banquet and meeting space. To compliment our hotel, guests enjoy the following features and amenities:

- Complimentary Hot and Deluxe Continental Breakfast
- Complimentary Coffee – 24 Hours a Day
- Complimentary Weekday Newspaper
- Free Local Calls – Within a 7 Mile Radius
- Indoor Heated Pool & Spa with Retractable Roof
- Fully Equipped Fitness Centre
- Arcade Room
- Oversized Work Desks
- In-Room Refrigerator and Microwave
- In-Room Coffee Makers
- Enterprise Rent-a-Car & Limo Service on Property
- Banquet and Conference Facilities – with High Speed Internet Available
- Fax and Copy Service Available – Charges May Apply
- In-Room Hair Dryers
- In-Room Ironing Boards and Irons
- Handicap Facilities
- Elevators
- Safe Deposit Boxes and In Room Safes
- On Site Restaurant
- Business Centre
- Complimentary Pizza & Beer – Monday Evenings from 5:00 PM until 7:00 PM
- Free High Speed Internet Available in all Hotel Rooms

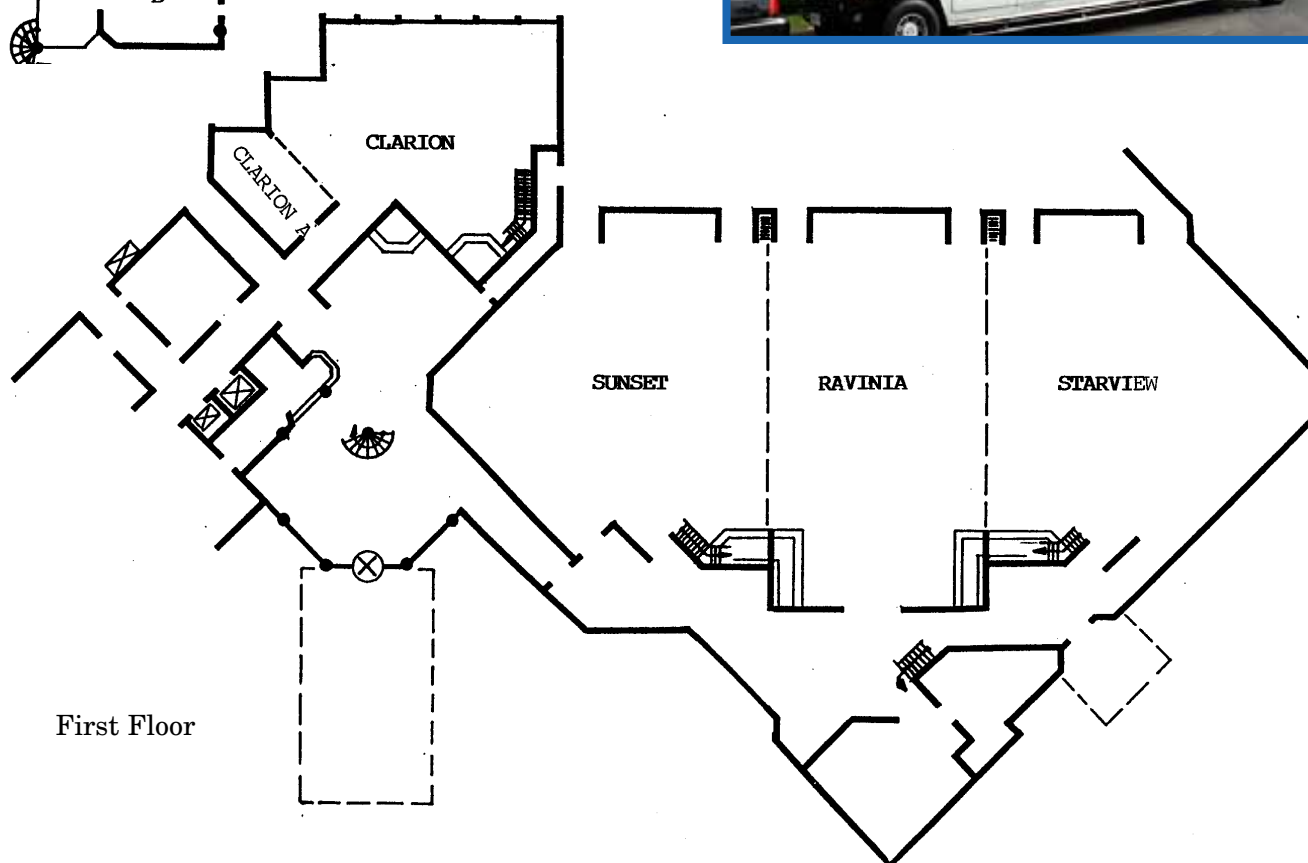
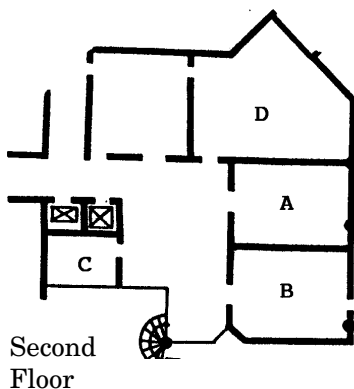
Georgios Banquets, Comfort Inn & Conference Centre is conveniently located to area businesses, golf courses, shopping, many restaurants and entertainment. Our facility encompasses approximately 22,000 square feet of flexible conference, meeting and banquet space. Eleven elegantly furnished multifunction rooms and a magnificent 14,000 square foot grand ballroom are perfectly suited for any business or social occasion up to 2,500 people.

Our attentive staff, comfortable function space and great location make us the perfect choice for your next conference, meeting or banquet. You can depend on our experienced, expert catering and convention service staff to coordinate all details and ensure a successful event.





Georgios Banquets Comfort Inn & Conference Centre



ROOM	DIMENSIONS	SQ. FEET	BANQUET	CLASSROOM	THEATRE	RECEPTION	CEILING	10'x10'	8'x10'
Sunset	70'x65'	4,550	400	200	650	400	18'	n/a	n/a
Ravinia	55'x80'	4,400	400	200	600	400	18'	n/a	n/a
Starview	70'x65'	4,550	400	200	650	400	18'	n/a	n/a
Sunset, Ravinia & Starview	195'x70'	13,500	1,200	n/a	1,900	1,200	18'	n/a	89
Clarion	55'x45'	2,475	225	110	250	225	18'	n/a	n/a
Clarion A	32'x18'	576	40	30	50	40	8'3"	n/a	n/a
A	21'x28'	588	50	32	60	50	8'3"	n/a	n/a
B	21'x28'	588	50	32	60	50	8'3"	n/a	n/a
C	17'7"x10'	177	n/a	Conf: 10	n/a	n/a	8'3"	n/a	n/a
D	26'x38'	1,000	60	48	80	60	8'3"	n/a	n/a
Hospitality Room 222		177	n/a	Conf: 10	n/a	n/a	8'3"	n/a	n/a
Hospitality Room 226		177	n/a	Conf: 10	n/a	n/a	8'3"	n/a	n/a



Hilton

Homewood Suites by Hilton

16245 South LaGrange Road
Orland Park, IL 60467

Meeting Rooms: 6

Guest Rooms: 81

The Homewood Suites by Hilton Orland Park and the Elements Conference Center is nestled in the heart of the Village of Orland Park, Illinois. It is perfectly situated within a premiere upscale Lifestyle Center featuring restaurants, shopping, and state of the art Marcus Movie Theater. It is conveniently located on South LaGrange road, only 1.5 miles from I-80 and with easy access to local businesses.



MEETING FACILITIES AND SERVICES

Providing beautiful facilities, catering, and audiovisual resources all under one roof, the conference center features over 6,500 square feet of elegantly appointed and flexible meeting space.

FACILITIES AND SERVICES

81 Non-Smoking All-Suite Accommodations. Four handicap accessible rooms available. Complimentary parking. Business Center with Computers and Printers. On-Site Suite Shop Convenience Store. Complimentary Deluxe Breakfast Buffet every morning featuring hot entrees. Manager's reception Monday – Thursday evenings featuring Complimentary light meal, Soft Drinks, Beer and Wine. Daily Housekeeping (we even do the dishes!). Complimentary grocery shopping service. Complimentary Local Phone Calls. Daily Valet Laundry Service available. 24 Hour Mail, Fax, and Copy Services available. Indoor Pool Area.

ALL ROOMS & SUITES FEATURE

Kitchens with Full Size Appliances including Refrigerator, Cooktop Stove, Microwave Oven, Coffee Maker, Toaster and Dishwasher equipped with China, Glasses, Utensils and Cookware. 27" and 32" Remote Control HD Flat Screen TV's with Cable and Premium Movie Channels. Two Phones with Easy Access Dataports. Voicemail Message System. Large Work Area with easy access Modern Hookup with Free Wireless Internet. Hairdryers, Irons, and Ironing Boards.

DINING AND ENTERTAINMENT

Complimentary Deluxe Breakfast Buffet every morning featuring hot entrees. Manager's reception Monday – Thursday evenings featuring Complimentary light meal, Soft Drinks, Beer and Wine. Being near the heart of downtown Orland Park allows for a multiple selection of restaurants and nightlife.

RECREATION

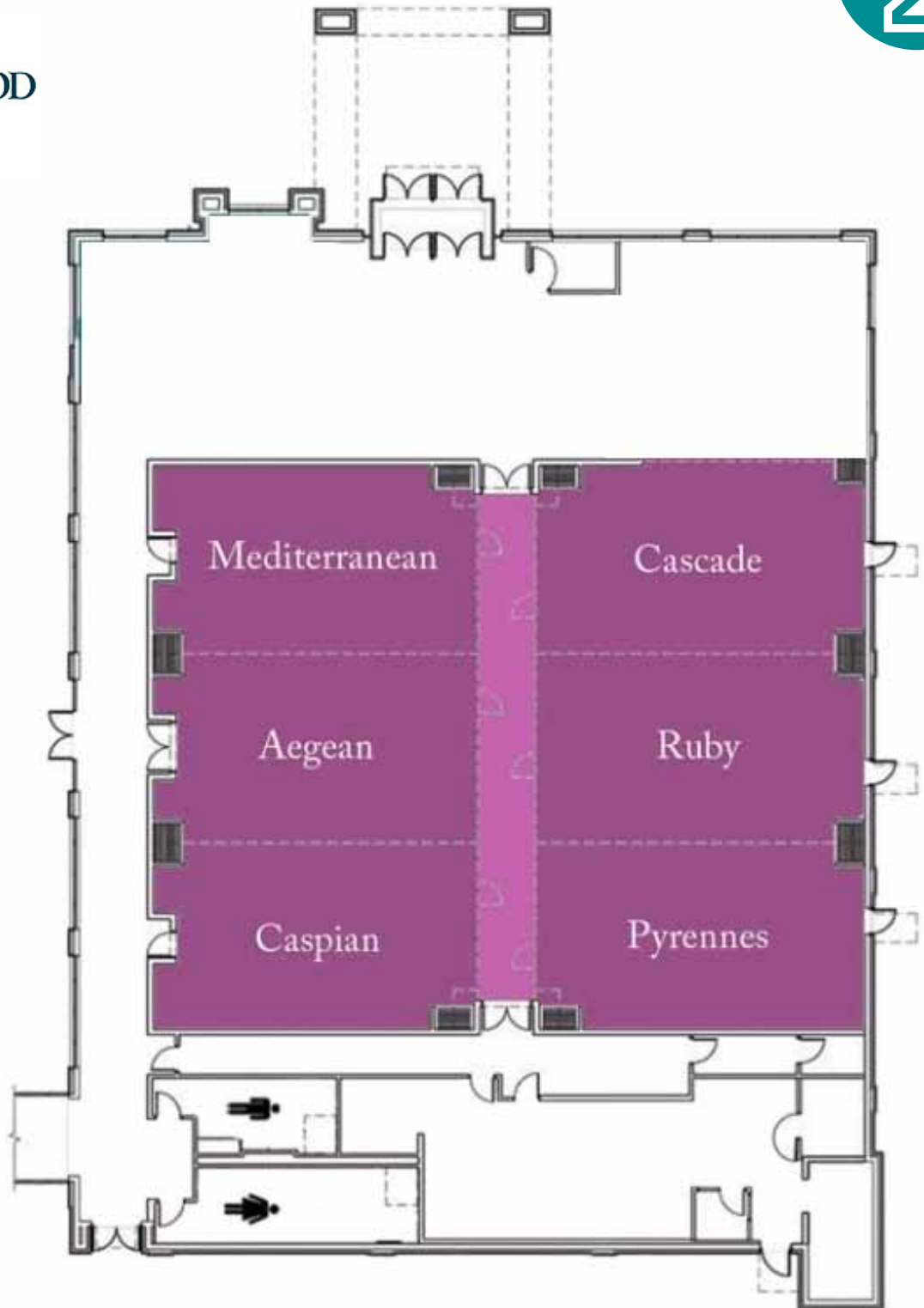
Indoor Pool Area. Onsite Fitness Center. 10 Minutes away from Area Golf Courses.

SURROUNDING ATTRACTIONS

Orland Park Square Mall, 3 miles. Silver Lakes Country Club, 4 miles. First Midwest Bank Amphitheatre, 8 miles. Joliet Casinos, 20 miles. Chicago Midway Airport, 20 miles. O'Hare Airport, 35 miles.

HILTON HHONORS

Be "At Home" and Earn Hilton HHonors Points for both hotel and airline miles. You don't have to choose! Contact our sales department today to learn more about the Hilton HHonors Event Planner Program and start earning points for your meetings and events.



ROOM	DIMENSIONS	SQ. FEET	BANQUET	CLASSROOM	THEATRE	RECEPTION	CEILING	10'x10'	8'x10'
Grand Ballroom	144'x246'	6013	400	150	525	350	17'	n/a	n/a
Cascade	24'x41'	984	40	60	85	40	17'	n/a	n/a
Pyrennes	24'x41'	984	40	60	85	40	17'	n/a	n/a
Ruby	24'x41'	984	40	60	85	40	17'	n/a	n/a
Mediterranean	24'x41'	984	40	60	85	40	17'	n/a	n/a
Aegean	24'x41'	984	40	60	85	40	17'	n/a	n/a
Caspian	24'x41'	984	40	60	85	40	17'	n/a	n/a



Holiday Inn



Holiday Inn Matteson Hotel and Conference Center

I-57 & Route 30
500 Holiday Plaza Drive
Matteson, IL 60443

Meeting Rooms: 9

Guest Rooms: 202

Over \$12 million has been invested in this newly renovated property nestled quietly in the growing city of Matteson. Chicago Southland's hidden gem, Holiday Inn Chicago Matteson Conference Center, is the premier spot for overnight accommodations, business meetings, elegant affairs and everything in between.

Bar Louie: The lobby holds a state-of-the-art Bar Louie, family friendly with an extensive menu and drink special Bar Louie Matteson is the largest 3D TV Bar in the world.

202 brand new rooms includes Holiday Inn's signature Perfect Pillow, Bath and Body Works bath amenities, complimentary wired and wireless internet access, 32" flat screen TV, work desk with ergonomic chair and much more.

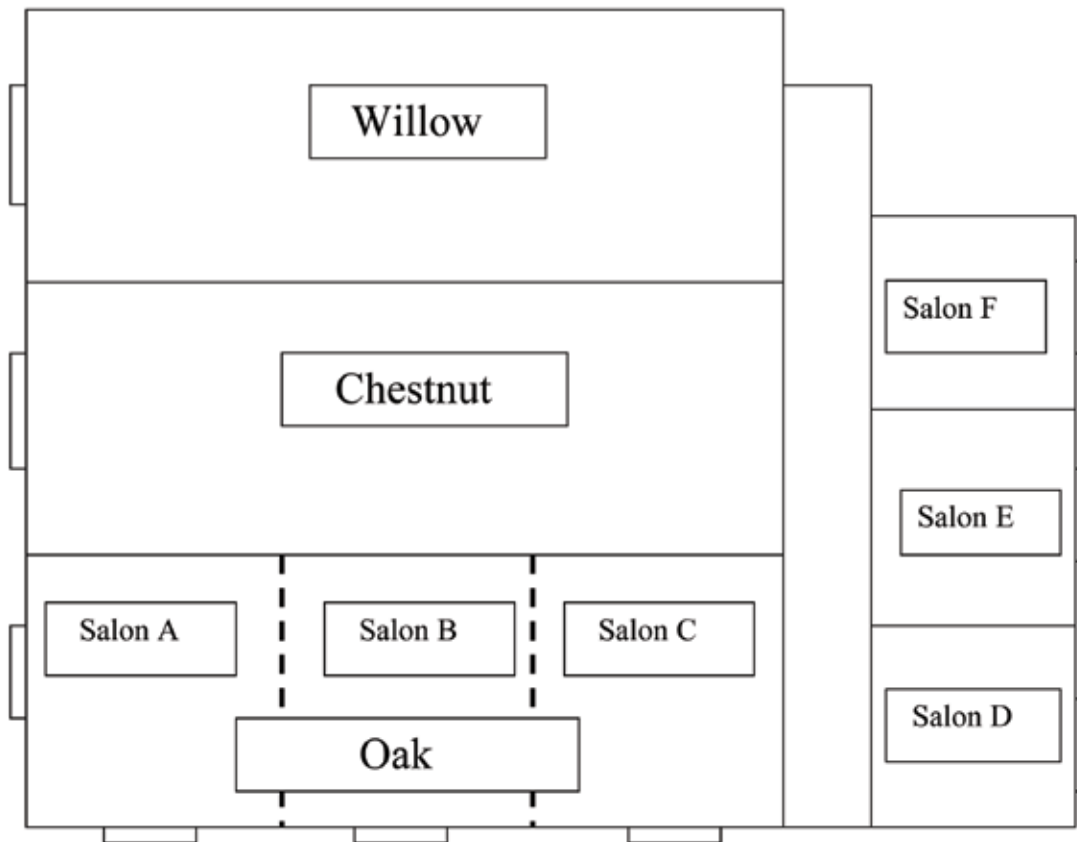
All your event needs can be met with 15,000 square feet of flexible meeting and banquet space perfect for groups of 10 to 1000. Our professional Sales and Catering Team will assist you with every detail for all occasions.

Additional amenities include but are not limited to: complimentary shuttle based on availability 5 mile radius only, room service, and indoor heated swimming pool with ADA lift, business center, complimentary USA Today, excellent guest service and Priority Club Member Check In. Lots of restaurants, shopping mall and Metra stop within 2 miles gives guests great dining options and easy access to downtown Chicago.

- 87 executive rooms with microwaves and mini fridges including 3 ADA rooms
- 59 standard kings including 9 ADA rooms
- 52 standard queens including 5 ADA rooms
- 4 king size 2 room suites including 1 ADA room



Holiday Inn



ROOM	DIMENSIONS	SQ. FEET	BANQUET	CLASSROOM	THEATRE	RECEPTION	CEILING	10'x10'	8'x10'
Sycamore Ballroom	78'x117'	9,126	500	550	900	900	14'	50	60
Oak	44'x78'	3,432	200	200	300	300	14'	n/a	n/a
Chestnut	36'x78'	2,808	150	150	300	300	14'	n/a	n/a
Willow	36'x78'	2,808	150	150	300	300	14'	n/a	n/a
Salon A,B,C	26'x44'	1,144	50	45	100	100	14'	n/a	n/a
Salon D,E,F	24'x24'	576	30	25	40	40	10'	n/a	n/a

Capacities are subject to change according to additional set-up requirements

Pre-function is available at any additional cost

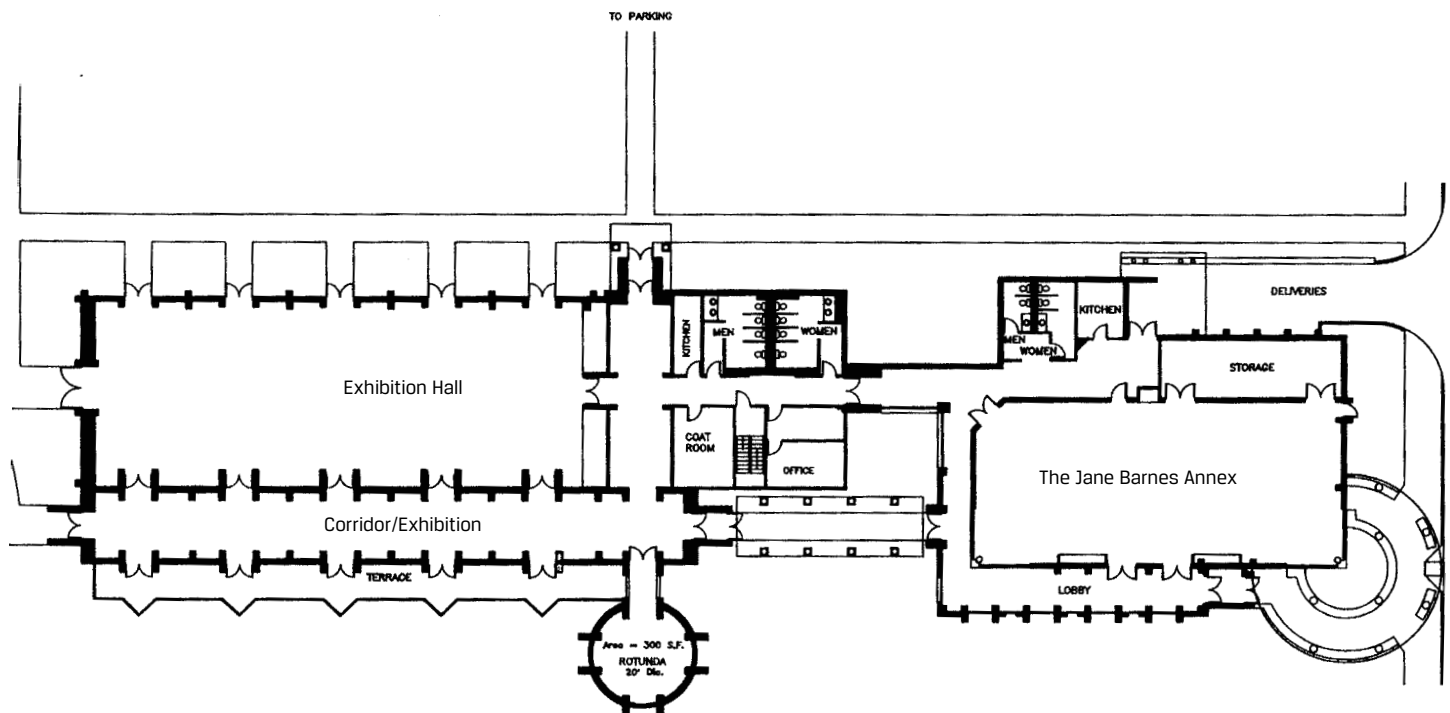
Orland Park CIVIC CENTER

Orland Park Civic Center

14750 South Ravinia Avenue
Orland Park, IL 60462

Meeting Rooms: 5

The Orland Park Civic Center is handicapped accessible and surrounded by ample parking. With more than 10,000 square feet of space, the Civic Center is ready to host your next sales conference, training seminar, reunion, sporting event, trade show, convention, theatrical, cultural, civic, educational or commercial activity. It is also the ideal setting for private events such as weddings, showers and christenings. Whether business or social, our staff is dedicated to making your event a success. We will be happy to provide suggestions for caterers, entertainers and other resources available to make sure that all the particulars for your event are satisfied. The Center offers flexibility, with connecting, interchangeable rooms to meet your specific needs. The Orland Park Civic Center wishes to make your occasion a happy and memorable event.



ROOM	DIMENSIONS	SQ. FEET	BANQUET	CLASSROOM	THEATRE	RECEPTION	CEILING
Exhibition Hall	37'x106'	3,885	250	200	450	450	9'
Grand Hall	13'x115'	2,400	n/a	n/a	n/a	50	20'
The Jane Barnes Annex	79'x35'	2,765	125	200	200	125	12'

HIGH SCHOOLS

Area 1 – Bridgeview, Burbank & Oak Lawn

Asqa High School (G)
7361 92nd Street
Bridgeview, IL 60455

Universal High School
7350 West 93rd Street
Bridgeview, IL 60455

St. Laurence High School
5556 West 77th Street
Burbank, IL 60459

Evergreen Park High School
9901 South Kedzie Avenue
Evergreen Park, IL 60805

Oak Lawn Community High School
9400 Southwest Highway
Oak Lawn, IL 60453

Richards High School
10601 South Central Avenue
Oak Lawn, IL 60453

Chicago Christian High School
12001 South Oak Park Avenue
Palos Heights, IL 60463

Shepard High School
13049 South Ridgeland Avenue
Palos Heights, IL 60463

A.A. Stagg High School
8015 West 111th Street
Palos Heights, IL 60465

Argo Community High School
7329 West 63rd Street
Summit, IL 60501

Area 2 – Alsip, Crestwood, Oak Forest, Orland Hills & Orland Park

Eisenhower High School
12700 South Sacramento
Blue Island, IL 60406

Bremen High School
15203 South Pulaski Road
Midlothian, IL 60445

Oak Forest High School
15201 South Central Avenue
Oak Forest, IL 60452

Sandburg High School
13300 South LaGrange Road
Orland Park, IL 60462

Area 3 – Chicago Heights, East Hazel Crest, Harvey, Homewood & Markham

Beecher High School
538 Miller Street
PO Box 338
Beecher, IL 60401

Bloom Township High Schools
(Bloom/Bloom Trail)
101 West Tenth Street
Chicago Heights, IL 60411

Marian Catholic High School
700 Ashland Avenue
Chicago Heights, IL 60411

Hillcrest High School
17401 South Pulaski Road
Country Club Hills, IL 60478

Thornton Township High School
15001 Broadway Avenue
Harvey, IL 60426

Rich Central High School
3600 East 203rd Street
Olympia Fields, IL 60461

Rich East High School
300 Sauk Trail
Park Forest, IL 60466

Area 4 – Calumet City, Lansing & South Holland

Thornton Fractional North High School
755 Pulaski Road
Calumet City, IL 60409

Crete-Monee High School
760 West Exchange Street
Crete, IL 60417

Illinois Lutheran High School
1610 Main Street
Crete, IL 60417

Thornridge High School
15000 Cottage Grove Avenue
Dolton, IL 60419

Illiana Christian High School
2261 Indiana Avenue
Lansing, IL 60438

Luther East High School
2750 Glenwood-Lansing Road
PO Box 404
Lansing, IL 60438

Thornton Fractional South High School
18500 Burnham Avenue
Lansing, IL 60438

Seton Academy
16100 Seton Road
South Holland, IL 60473

Thornwood High School
17101 South Park Avenue
South Holland, IL 60473

Area 5 – Matteson, Mokena & Monee

Lincoln-Way East High School
201 Colorado Avenue
Frankfort, IL 60423

Lincoln-Way North High School
19900 South Harlem Avenue
Frankfort, IL 60423

Lincoln-Way Central High School
1801 East Lincoln Highway
New Lenox, IL 60451

Lincoln-Way West High School
21701 South Gougar Road
New Lenox, IL 60451

Providence Catholic High School
1800 West Lincoln Highway
New Lenox, IL 60451

Peotone High School
605 West North Street
Peotone, IL 60468

Rich South High School
5000 Sauk Trail
Richton Park, IL 60471

Area 6 – Tinley Park

V. J. Andrew High School
9001 West 171st Street
Tinley Park, IL 60477

Tinley Park High School
6111 West 175th Street
Tinley Park, IL 60477

Outside the Chicago Southland

Brother Rice High School (B)
10001 South Pulaski Road
Chicago, IL 60655

Marist High School
4200 West 115th Street
Chicago, IL 60655

Mother McAuley High School (G)
3737 West 99th Street
Chicago, IL 60655

GOLF COURSES

Public Courses

Area 1 – Bridgeview, Burbank & Oak Lawn

Hickory Hills Country Club
8201 West 95th Street
Hickory Hills, IL 60457
-North Course-9 Holes
-South Course-18 Holes

Stony Creek Golf Course
5860 West 103rd Street
Oak Lawn, IL 60453
-18 Holes

Palos Country Club
13100 Southwest Highway
Orland Park, IL 60462
-9 Holes

Oak Hills Country Club
13200 South 76th Street
Palos Heights, IL 60482
-9 Holes

Palos Hills Golf Club
7301 West 105th Street
Palos Hills, IL 60465
-9 Holes

Water's Edge Golf Club
7205 West 115th Street
Worth, IL 60482
-18 Holes

Area 2 – Alsip, Crestwood, Oak Forest, Orland Hills & Orland Park

Fountain Hills Golf Club
12601 South Kostner Avenue
Alsip, IL 60803
-9 Holes

Meadows of Blue Island
2802 West 123rd Street
Blue Island, IL 60406
-18 Holes

Old Oak Country Club
14200 South Parker Road
Homer Glen, IL 60491
-18 Holes

Woodbine Golf Course
14240 West 151st Street
Homer Glen, IL 60491
-18 Holes

George W. Dunne National Golf Course
16310 South Central Avenue
Oak Forest, IL 60452
-18 Holes

Silver Lake Country Club
14700 South 82nd Avenue
Orland Park, IL 60462
-Rolling Hills-9 Holes
-North Course-18 Holes
-South Course-18 Holes

White Mountain Golf Center
9901 West 179th Street
Tinley Park, IL 60477
-9 Holes

Area 3 – Chicago Heights, East Hazel Crest, Harvey, Homewood & Markham

Chicago Heights Park District
West Golf Course
1112 Scott Avenue
Chicago Heights, IL 60411
-9 Holes

Coyote Run Golf Course
800 Kedzie Avenue
Flossmoor, IL 60422
-18 Holes

Ravisloe Country Club
18231 Park Avenue
Homewood, IL 60430
-18 Holes

Joe Louis Golf Course & Driving Range
13100 South Halsted Street
Riverdale, IL 60827
-18 Holes

Deer Creek Golf Club
25055 South Western Avenue
University Park, IL 60466
-18 Holes

University Golf & Conference Center
23520 Crawford Avenue
University Park, IL 60466
-18 Holes



GOLF COURSES

Area 4 –

Calumet City, Lansing & South Holland

Cardinal Creek Golf Course

615 South Dixie Highway
Beecher, IL 60401
-Center Course-9 Holes
-North Course-9 Holes
-South Course-9 Holes

Burnham Woods Golf Course

14201 Burnham Avenue
Burnham, IL 60633
-18 Holes

River Oaks Golf Course

1 Park Avenue
Calumet City, IL 60409
-18 Holes

Chicago Heights Park District

East Golf Course
315 Glenwood Road
Chicago Heights, IL 60411
-9 Holes

Balmoral Woods Country Club

26732 South Balmoral Woods Drive
Crete, IL 60417
-18 Holes

Lansing Country Club

18600 Wentworth Avenue
Lansing, IL 60438
- 18 holes

Lincoln Oaks Golf Course

395 East Richton Road
Crete, IL 60417
-18 Holes

Longwood Country Club

3503 East Steger Road
Crete, IL 60417
-18 Holes

Tuckaway Golf Club

27641 Stony Island
Crete, IL 60417
-18 Holes

Glenwoodie Golf Course

19301 South State Street
Glenwood, IL 60425
-18 Holes

Area 5 –

Matteson, Mokena & Monee

Green Garden Country Club

9511 West Manhattan-Monee Road
Frankfort, IL 60423
-Blue Course-18 Holes
-Gold Course-18 Holes

Square Links Golf Course & Driving Range

7861 West St. Francis Road
Frankfort, IL 60423
-9 Holes

Willow Run Country Club

12600 187th Street
Mokena, IL 60448
-9 Holes

Golf Vista Golf Course

5001 West Augusta Boulevard
Monee, IL 60449
-9 Holes

The Sanctuary Golf Club

485 North Marley Road
New Lenox, IL 60451
-18 Holes

Area 6 –

Tinley Park

Odyssey Country Club

19110 South Ridgeland Avenue
Tinley Park, IL 60477
-18 Holes

Private (alphabetical by city)

Lincolnshire Country Club
390 East Richton Road
Crete, IL 60417
-18 Holes

Flossmoor Country Club
1441 Western Avenue
Flossmoor, IL 60422
-18 Holes

Idlewild Country Club
19201 Dixie Highway
Flossmoor, IL 60422
-18 Holes

Prestwick Country Club
601 Prestwick Drive
Frankfort, IL 60423
-18 Holes

Calumet Country Club
2400 West 175th Street
Homewood, IL 60430
-18 Holes

Midlothian Country Club
5000 147th Street
Midlothian, IL 60445
-18 Holes

Olympia Fields Country Club
2800 Country Club Drive
Olympia Fields, IL 60461
-North Course-18 Holes
-South Course-18 Holes

Crystal Tree Golf & Country Club
10700 West 153rd Street
Orland Park, IL 60462
-18 Holes

PARK DISTRICTS

Area 1 – Bridgeview, Burbank & Oak Lawn

Bedford Park Park District

6700 South 78th Street

Bedford Park, IL 60501

-Community Park

-Swanson Center

Aerobics, Archery, Baseball, Basketball, Cheerleading, Fitness, Fitness Center, Frisbee, Horseshoes, Running/Walking, Softball, Volleyball, Weight Lifting

Bridgeview Park District

8100 South Beloit

Bridgeview, IL 60455

-Commissioners Park

-Moehe Park Rental Facility

-Bridgeview Sports Complex

Basketball

Burbank Park District

8050 South New Castle Avenue

Burbank, IL 60459

-Newcastle Park

Baseball, Soccer, Softball

Chicago Ridge Park District

9807 South Sayre

Chicago Ridge, IL 60415

-Ball Fore Miniature Golf

-Commissioner's Park

-Freedom Park Activity Center

-Frontier Park Fieldhouse

Baseball, Basketball, Boxing,

Cheerleading, Dancing, Fitness, Fitness

Center, Football, Martial Arts, Running/

Walking, Softball, Track & Field,

Volleyball, Wrestling

Evergreen Park Recreation

3450 West 97th Street

Evergreen Park, IL 60805

-Village Community Center

-Klein Park

-Norris Field

-Northwest Park

Ice Skating

Oak Lawn Park District

4625 West 110th Street

Oak Lawn, IL 60453

-Community Pavilion

-Ice Arena

-Oakview Community Center

-Oak Lawn Racquet, Fitness

& Gymnastic Center

-Centennial Park

-Stony Creek Golf Course

Aerobics, Baseball, Basketball, Boxing,

Cheerleading, Dancing, Fitness, Golf,

Gymnastics, Martial Arts, Racquet

Sports, Running/Walking, Soccer,

Softball, Track & Field, Volleyball,

Wrestling

City of Palos Heights

Park & Recreation Department

6601 West 127th Street

Palos Heights, IL 60463

-Community Park

-Palos Heights Recreation Center

Aerobics, Dancing, Diving, Lacrosse,

Pool, Soccer, Swimming, Tennis, Water

Polo

Palos Hills Park District

8455 West 103rd Street

Palos Hills, IL 60465

-Community Activity Center

-Krasowski Park

Golf

Palos Park Recreation Department

8901 West 123rd Street

Palos Park, IL 60464

-Palos Park Recreation Center

Aerobics, Baseball, Basketball,

Cheerleading, Dancing, Fitness, Softball,

Tennis, Volleyball

Summit Park District

5700 South Archer Road

Summit, IL 60501

-Summit Park & Disc Golf

Basketball, Disc Golf, Frisbee, In-line

Skating, Skateboarding, Softball, Tennis,

Volleyball (Sand)

Worth Park District

11500 South Beloit

Worth, IL 60482

-Christensen Terrace Centre

-Worthwoods Park

-Peaks Park

Area 2 –

Alsip, Crestwood, Oak Forest, Orland Hills & Orland Park

Alsip Park District

12521 South Kostner

Alsip, IL 60803

-Apollo Recreation Center

-Commissioners Park

-Fountain Hills Golf Club

Golf, Pool, Softball

Blue Island Park District

12804 South Highland Avenue

Blue Island, IL 60406

-Bark Park

-Blue Island Recreation Center

-Centennial Park

-Hart Park

-Memorial Park & Fieldhouse

Baseball, Cheerleading, Dancing,

Fitness, Football, Hockey (Ice), Ice

Skating, Martial Arts, Rugby, Running/

Walking, Skateboarding, Soccer,

Swimming

Midlothian Park District

14500 South Kostner Avenue

Midlothian, IL 60445

-Don Preston Recreation Center

-Howie Minas Field

-Memorial Park

-Raday Lodge

Baseball, Cheerleading, Soccer, Softball,

Wrestling

Oak Forest Park District

15601 South Central Avenue

Oak Forest, IL 60452

-Central Park & Building

-Convent Park

-Don Gorman Fieldhouse

-El Morro Park & Forest Trails

Miniature Golf Course

Fishing (catch & release only, not ADA accessible), skateboarding

Orland Hills Recreation Department

16553 South Haven Avenue

Orland Hills, IL 60487

-Orland Hills Community Center

-Kelly Park

Aerobics, Baseball, Basketball, Boxing,

Cheerleading, Dancing, Darts, Fishing,

Fitness, Frisbee, Football, Running/

Walking, Softball, Volleyball

PARK DISTRICTS

Orland Park Recreation

14650 South Ravinia Avenue
Orland Park, IL 60462

-Centennial Park
-Sportsplex Recreation Center
-John Humphrey Complex
-Cachey Park
-Schussler Park
-Veterans Park
-Doogan Park - Disc Golf
Aerobics, Baseball, Basketball, Dancing, Disc Golf, Fencing, Fishing, Fitness, Fitness Center, Football, Gymnastics, Ice Skating, Lacrosse, Martial Arts, Pool, Running/Walking, Skateboarding, Soccer, Softball, Swimming, Tennis, Volleyball, Weight Lifting, Wrestling

Area 3 –

Chicago Heights, East Hazel Crest, Harvey, Homewood & Markham

Beecher Recreation

PO Box 1233
Beecher, IL 60401
-Firemen's Park

Calumet Park Recreation

12426 South Loomis Street
Calumet Park, IL 60827
-Calumet Park Recreation Center

Chicago Heights Park District

1400 Chicago Road
Chicago Heights, IL 60411
-Bob Lueder Ball Fields
-Commissioner's Park
-Greenbriar Play Area
-Hap Bruno Baseball Park
-Chicago Heights Recreation & Fitness Center
Aerobics, Baseball, Basketball, Boxing, Dancing, Fitness, Fitness Center, Flag Football, Golf, Horseshoes, Martial Arts, Running/Walking, Soccer, Softball, Swimming, Volleyball, Weight Lifting, Wrestling

Country Club Hills Parks & Recreation

4709 West 179th Street
Country Club Hills, IL 60478
-Community Park
-Community Recreation Center
Baseball, Basketball, Cheerleading, Football, Hockey (Field), Softball, Track & Field, Volleyball

Harvey Park District

15335 Broadway Avenue
Harvey, IL 60426
-Gloria Taylor Park & Recreation Center
-ML King Jr. Park & Recreation Center
Aerobics, Baseball, Basketball, Cheerleading, Dancing, Fitness, Golf, Martial Arts, Running/Walking, Soccer, Wrestling

Hazel Crest Park District

2600 West 171st Street
Hazel Crest, IL 60429
-James O. Setnes Complex
Baseball, Basketball, Boxing, Cheerleading, Cycling, Dancing/Line Dancing, Fishing, Fitness, Fitness Center, Running/Walking, Soccer, Softball, Swimming

Homewood/Flossmoor Park District

3301 Flossmoor Road
Flossmoor, IL 60422
-Apollo Park
-Flossmoor Park & Fieldhouse
-H/F Ice Arena
-H/F Park District Auditorium
-Irwin Park & Community Center
-H/F Racquet and Fitness Club
-Patriots Park – Disc Golf
-Dolphin Lake
Archery, Baseball, Basketball, Football, Golf, Hockey (Floor/Roller), Ice Skating, Skateboarding, Soccer, Softball, Swimming, Tennis, Table Tennis, Volleyball

Markham Park District

16053 Richmond
Markham, IL 60428
-King Park
-Roesner Park
Aerobics, Baseball, Basketball, Cheerleading, Fitness, Football, Running/Walking, Soccer, Tennis, Volleyball

Olympia Fields Park District

20712 Western Avenue
Olympia Fields, IL 60461
-Bicentennial Park
-Sergeant Means Park & Meeting Center
-Sergeant Means Park - Disc Golf
-Irons Oaks Environmental Learning Center
Aerobics, Baseball, Basketball, Dancing, Disc Golf, Fitness, Football, Frisbee, Hockey (Field), Hockey (Floor/Roller), Horseshoes, Martial Arts, Racquet Sports, Running/Walking, Soccer, Softball, Tennis, Volleyball

Park Forest Park District

350 Victory Drive
Park Forest, IL 60466
-Freedom Hall, Theater and Conference Center
-Central Park
-Park Forest Recreation Center/Skate Park
-Park Forest Tennis & Health Club
-Wetlands Discovery Center
-Park Forest Aqua Center
Baseball, Basketball, Football, Running/Walking, Sand Volleyball, Softball, Swimming, Tennis

Steger Park District

3501 Hopkins Avenue
Steger, IL 60475
-Veteran's Memorial Park
-Steger Community Center
-Harold Hecht Park

University Park Park District

698 Burnham Drive
University Park, IL 60484
-Palmer Park
-Craig Park
Baseball, Football

Area 4 –

Calumet City, Lansing & South Holland

Calumet Memorial Park District

612 Wentworth Avenue
Calumet City, IL 60409
-Sandridge Community Center
-Downey Park
-Family Fun Center
-Memorial Park
-Superior Street Complex
Baseball, Basketball

PARK DISTRICTS

Crete Park District

515 First Street
Crete, IL 60417
-Heritage Park
Soccer, Softball

Dolton Park District

721 Engle Street
Dolton, IL 60419
-Dolton Recreation Center
Aerobics, Baseball, Basketball, Fitness Center, Tennis

Ivanhoe North Park District

151 West 17th Street
Riverdale, IL 60627
-Community Center
Auto Sports, Billiards/Pool, Bowling, Boxing, Disc Golf, Diving, Figure Skating, Fishing, Golf, Hockey (Ice), Ice Skating, In-line Skating, Lacrosse, Pool, Roller Skating, Rowing, Rugby, Skateboarding, Swimming, Track & Field, Water Polo, Water Sports

Ivanhoe South Park District

14401 Stewart Street
Riverdale, IL 60627
-Ivanhoe Park Fieldhouse
Auto Sports, Billiards/Pool, Bowling, Boxing, Disc Golf, Diving, Figure Skating, Fishing, Golf, Hockey (Ice), Ice Skating, In-line Skating, Lacrosse, Pool, Roller Skating, Rowing, Rugby, Skateboarding, Swimming, Track & Field, Water Polo, Water Sports

Lan-Oak Park District

Administration Office
17551 Chicago Avenue
Lansing, IL 60438
-Eisenhower Community & Fitness Center
-Lions Stadium
-Old Timers Sports Complex

South Holland Park District

501 East 170th Street
South Holland, IL 60473
-South Holland Community Center
-Gouwens Park
-Veteran's Park
Baseball, Basketball, Softball, Tennis

Thornton Park District

701 Highland Avenue
Thornton, IL 60467
-Hubbard Park/Thornton Ball Fields
Aerobics, Baseball, Dancing, Fitness, Fitness Center, Gymnastics, Hockey (Floor/Roller), Martial Arts, Skateboarding, Softball, Tennis, Volleyball, Weight Lifting

Area 5 –

Matteson, Mokena & Monee

Frankfort Park District

140 Oak Street
Frankfort, IL 60423
-Founders Center
-Commissioner's Park & Disc Golf
-Main Park
Archery, Fishing, Hockey (Floor/Roller), In-Line Skating, Skateboarding, Softball

Frankfort Square Park District

7540 West Braemer Lane
Frankfort, IL 60423
-Indian Boundary South Park-Disc Golf
-Kiwanis Park
-Summit Hill Park
-Union Creek Community Park

Matteson Park District

4450 West Oakwood Lane
Matteson, IL 60443
-Allemong Park
-Woodgate Park
-Memorial Park & Fieldhouse
-Matteson Community Center
Baseball, Softball

Mokena Park District

10925 LaPorte Road
Mokena, IL 60448
-The Oaks Recreation & Fitness Center
-The Oaks Disc Golf Course
-Grasmere Park
-Hecht Park
-Main Park
Aerobics, Baseball, Basketball, Cheerleading, Cycling, Disc Golf, Fitness, Fitness Center, Football, Frisbee, Gymnastics, Lacrosse, Martial Arts, Rugby, Running/Walking, Skateboarding, Soccer, Softball, Tennis, Track & Field, Volleyball

Monee Park District

5130 West Court Street
Monee, IL 60449
-Firemen's Park

New Lenox Park District

1 Manor Drive
New Lenox, IL 60451
-Bentley/Tyler Athletic Fields
-Francis Field
-Haine's Wayside Park - Disc Golf
-Lions Community Center
-Walona Park
-Fields on South end of town
Baseball, Basketball, Cheerleading, Dancing, Disc Golf, Fishing, Fitness, Fitness Center, Football, Golf, Soccer, Softball, Track & Field, Volleyball (Sand)

Richton Park Parks & Recreation

Department
4445 Sauk Trail
Richton Park, IL 60471
-Community Center
-Glaeser Park
-Pierce Park
Aerobics, Baseball, Basketball, Cheerleading, Dancing, Fitness, Floor Hockey, Football, Gymnastics, Martial Arts, Running/Walking, Soccer, Softball, Tennis, Volleyball, Wrestling

Area 6 –

Tinley Park

Tinley Park Park District

8125 West 171st Street
Tinley Park, IL 60477
-Bettenhausen Park
-Community Park
-Freedom Park
-Gunther Sports Field
-Memorial Park
-Tinley Fitness Center
-Tinley Junction Mini Golf
-Tony Bettenhausen Recreation Center
-Vogt Woods Park
Aerobics, Baseball, Basketball, Cheerleading, Fencing, Fishing, Fitness, Fitness Center, Football, Lacrosse, Martial Arts, Soccer, Softball, Tennis

Gymnastic/Cheer/Dance (alphabetical by city)

3D Gymnastics and Cheer

5012 West 123rd Street
Alsip, IL 60803
Area 2

Chicago Gymnastics & Cheer Academy

2700 West 91st Street (Lower)
Evergreen Park, IL 60805
Area 1

United Gymnastics Academy

722 Center Road
Frankfort, IL 60423
Area 5

Cheer Command, Inc.

9960 West 191st, Unit L
Mokena, IL 60448
Area 5

Gym-Kinetics Gymnastics

19220 Ridge Drive
Mokena, IL 60448
Area 5

Flipstar Gymnastics

1906 Ferro Drive
New Lenox, IL 60451
Area 5

Tumbling and Cheerleading Academy

10714 West 163rd Place
Orland Park, IL 60467
Area 2

Xtreme Force Cheer & Dance Center

10482 West 163rd Street
Orland Park, IL 60467
Area 2

Gainers Gymnastics

3301 Butler Street
South Chicago Heights, IL 60411
Area 3

Allstar Athletics

Cheerleading Training Center
18475 Thompson Court (7800 West)
Tinley Park, IL 60477
Area 6

Private Sports Facilities (alphabetical by city)

Bridgeview Sports Dome

8900 South 77th Avenue
Bridgeview, IL 60455
Area 1

Balmoral Park Race Track

26435 South Dixie Highway
Crete, IL 60417
Area 4

The Badlandz Paintball Field

Intersection of IL 394 & Elms Court
Crete, IL 60417
Area 4
-Paintball

Willy Roy Soccer Dome

15030 South Dante Avenue
Dolton, IL 60419
Area 4
-Indoor Soccer

Hallmark Sports Club

10850 Laraway Road
Frankfort, IL 60423
Area 5
-Basketball
-Indoor Soccer
-Martial Arts
-Volleyball

Chicagoland Paintball

537 West 195th Street
Glenwood, IL 60425
Area 4
-Paintball

The Megaplex

15301 South Bell Road
Homer Glen, IL 60491
Area 2
-Basketball
-Inline Hockey
-Indoor Soccer
-Volleyball

Homewood-Flossmoor Raquet & Fitness Club

2920 West 183rd Street
Homewood, IL 60430
Area 3
-Tennis
-Raquetball

Chicago Gaelic Park

6119 West 147th Street
Oak Forest, IL 60452
Area 2
-Gaelic Sports
-Soccer
-Rugby

Chicagoland Speedway & Route 66 Raceway

500 Speedway Boulevard
Joliet, IL 60433
Outside the Chicago Southland
-Auto Racing

Ho-Chunk Sports & Expo Center

10 Southland Drive
Lynwood, IL 60411
Area 4
-Cheerleading
-Dancing
-Football
-Indoor Soccer
-Martial Arts

Francis Field

521 East Francis Road
New Lenox, IL 60451
Area 5
-Exhibition Hall
-Animal Shows (Dog, Horse, etc.)
-Soccer

Orland Park Civic Center

14750 South Ravinia Avenue
Orland Park, IL 60462
Area 2
-Exhibit Hall

Orland Park Sports Plex

11351 West 159th Street
Orland Park, IL 60467
Area 2
-Basketball
-Indoor Soccer
-Running
-Volleyball

Riviera Country Club & Sports Center

8801 West 183rd Street
Orland Park, IL 60462
Area 2
-Basketball
-Racquetball
-Tennis

OTHER SPORTS FACILITIES

Palos Courts

12221 South Ridgeland Avenue
Palos Heights, IL 60463
Area 1
-Basketball
-Volleyball
-Racquetball

Will County Fairgrounds

710 South West Street
PO Box 578
Peotone, IL 60468
Area 5

Ice Arenas/Rinks (alphabetical by city)

Southwest Ice Arena

5505 West 127th Street
Crestwood, IL 60445
Area 2

Homewood-Flossmoor Ice Arena

777 Kedzie Avenue
Homewood, IL 60430
Area 3

Oak Lawn Ice Arena

9320 South Kenton Avenue
Oak Lawn, IL 60453
Area 1

Arctic Ice Arena

10700 West 160th Street
Orland Park, IL 60467
Area 2

Bowling Alleys (alphabetical by city)

Anchor Bowling Lanes

1859 Burr Oak Avenue
Blue Island, IL 60406
Area 2

-16 Lanes

Burr Oak Bowl

3030 West 127th Street
Blue Island, IL 60406
Area 2
-32 Lanes

Eagle's Bowling Lanes

2427 Grove Street
Blue Island, IL 60406
Area 2
-10 Lanes

El-Mar Bowl

8435 South Harlem Avenue
Bridgeview, IL 60455
Area 1
-32 Lanes

Castaways Bowl

1025 Sibley Boulevard
Calumet City, IL 60409
Area 4
-32 Lanes

Dolton Bowl

1401 East Sibley Boulevard
Dolton, IL 60419
Area 4
-36 Lanes

Bleeker's Bowling Lanes

3449 West 95th Street
Evergreen Park, IL 60805
Area 1
-24 Lanes

Frankfort Bowl

15 Ash Street
Frankfort, IL 60423
Area 5
-6 Lanes

Brunswick Zone - Homewood

3043 183rd Street
Homewood, IL 60430
Area 3
-40 Lanes

Lan-Oak Lanes

2524 Ridge Road
Lansing, IL 60438
Area 4
-16 Lanes

Lynwood Bowl

2581 Glenwood-Lansing Road
Lynwood, IL 60411
Area 4
-16 Lanes

Thunder Bowl

18700 Old LaGrange Road
Mokena, IL 60448
Area 5
-24 Lanes

Laraway Lanes

1009 Laraway Road
New Lenox, IL 60451
Area 5
-24 Lanes

Oak Forest Bowl

15240 South Cicero Avenue
Oak Forest, IL 60452
Area 2
-32 Lanes

Brunswick Zone - Oak Lawn

4700 West 103rd Street
Oak Lawn, IL 60453
Area 1
-40 Lanes

Orland Bowl

8601 West 159th Street
Orland Park, IL 60462
Area 2
-50 Lanes

Palos Lanes

11025 Southwest Highway
Palos Hills, IL 60465
Area 1
-32 Lanes

Peotone Bowling Center

2110 North 2nd Street
Peotone, IL 60468
Area 5
-8 Lanes

Lakewood Bowl

5125 Sauk Trail
Richton Park, IL 60471
Area 5
-32 Lanes

AMF Classic Lanes

3210 East End Avenue
South Chicago Heights, IL 60475
Area 3
-32 Lanes

OTHER SPORTS FACILITIES

South Holland Bowling Lanes

16113 South Park Avenue
South Holland, IL 60473
Area 4
-8 Lanes

Centennial Lanes

16050 Centennial Circle
Tinley Park, IL 60477
Area 6
-32 Lanes

Tinley Park Bowling Lanes

7601 West 183rd Street
Tinley Park, IL 60477
Area 6
-28 Lanes

Roller Skating Rinks (alphabetical by city)

Glenwood Roller Rink

656 Hollbrook Road
Glenwood, IL 60425
Area 4

Lynwood Sport Center – Skate Lynwood

2030 Glenwood-Dyer Road
Lynwood, IL 60411
Area 4

Markham Roller Rink

16630 South Dixie Highway
Markham, IL 60428
Area 3

Rich City Skate

4645 Sauk Trail
Richton Park, IL 60471
Area 5

Fleetwood Skating Rink

7231 West Archer
Summit, IL 60501
Area 1

Tinley Park Roller Rink

17568 South Oak Park Avenue
Tinley Park, IL 60477
Area 6

Outdoor Recreation (alphabetical by city)

Cal-Sag Channel

Marina Locations in:
Alsip, Burnham & Riverdale

A-Ranch 394

1465 Glenwood-Lansing Road
Chicago Heights, IL 60411
Area 3

Old Plank Road Trail

Matteson Parks & Recreation
Department
4450 Oakwood Lane
Matteson, IL 60443
Areas 3,5

Monee Reservoir

27341 Ridgeland Avenue
Monee, IL 60449
Area 5

Irons Oaks Environmental Learning Center

20000 South Western Avenue
Olympia Fields, IL 60461
Area 3
-Nature/Environment Education
-Outdoor Recreation
-Team Building Programs

Fitzjoy Farm Riding Academy

12211 South LaGrange Road
Palos Park, IL 60464
Area 1

Forest View Farms

16717 South Lockwood
Tinley Park, IL 60477
Area 6

Colleges/Universities (alphabetical by city)

St. Xavier University

3700 West 103rd Street
Chicago, IL 60665
Outside the Chicago Southland

Prairie State College

202 South Halsted Street
Chicago Heights, IL 60411
Area 3

Trinity Christian College

6601 West College Drive
Palos Heights, IL 60463
Area 1

Moraine Valley Community College

10900 South 88th Avenue
Palos Hills, IL 60465
Area 1

Governors State University

1 University Parkway
University Park, IL 60466
Area 3



ACCOMMODATIONS

Area 1 – Bridgeview, Burbank & Oak Lawn Hotels

Best Western Midway Airport	87 rooms
Days Inn - Bridgeview	110 rooms
Hilton Chicago/Oak Lawn	184 rooms
Super 8 - Bridgeview	55 rooms

Motels	
Bridgeview Inn Motel	62 rooms
Budget Inn - Burbank	30 rooms
Clayton Motel	19 rooms
Cloud 9 Motel	22 rooms
Gateway Motel & Inn	27 rooms
Miami Motel	59 rooms
Midway Inn & Suites	58 rooms
New Relax Inn	30 rooms

Total Number of Guest Rooms: 743

Area 2 – Alsip, Crestwood, Oak Forest, Orland Hills & Orland Park Hotels

Baymont Inn & Suites - Alsip	100 rooms
BEST WESTERN PLUS - Oak Forest	59 rooms
Comfort Inn & Conference Centre & Georgios Banquets	159 rooms
Days Inn - Alsip	108 rooms
Doubletree by Hilton Chicago-Alsip	193 rooms
Holiday Inn Express - Crestwood	123 rooms
Homewood Suites by HILTON	81 rooms

Motels	
Budget Lodge	23 rooms
Key Motel	20 rooms
Presidential Inn & Suites Motel	60 rooms
Terrace Motel	35 rooms

Total Number of Guest Rooms: 961

Area 3 – Chicago Heights, East Hazel Crest, Harvey, Homewood & Markham Hotels

Chicago Southland Inn & Suites - Markham	54 rooms
Days Inn - Harvey	72 rooms
Motel 6 - Harvey	75 rooms
Quality Inn & Suites - Harvey	71 rooms
Super 8 - East Hazel Crest	144 rooms

Motels	
The Star Motel	27 rooms

Total Number of Guest Rooms: 443

Area 4 – Calumet City, Lansing & South Holland Hotels

Baymont Inn & Suites - Calumet City	78 rooms
Clarion Inn - South Holland	80 rooms
Comfort Suites - Lansing	64 rooms
Days Inn - Lansing	165 rooms
Extended Stay America	121 rooms
Holiday Inn Express Hotel & Suites - Chicago South Lansing	80 rooms
Howard Johnson - Lansing	132 rooms
Motel 6 - Lansing	49 rooms
Red Carpet Inn - South Holland	130 rooms
Red Roof Inn - Lansing	108 rooms
Sleep Inn Hotel - Lansing	69 rooms

Motels	
Clover Leaf Motel	21 rooms
Holland Inn & Suites	63 rooms
South Holland Inn	104 rooms
Starway Inn - Lansing	40 rooms

Total Number of Guest Rooms: 1,304

Area 5 – Matteson, Mokena & Monee Hotels

American Best Value Inn & Suites	75 rooms
Best Western - Monee	44 rooms
Country Inn & Suites - Matteson	84 rooms
Hampton Inn & Suites Chicago Southland - Matteson	91 rooms
Holiday Inn Chicago Matteson Conference Center	204 rooms
LaQuinta Inn & Suites - Matteson	108 rooms
Red Roof Inn & Suites - Monee	85 rooms
Super 8 - Mokena/Frankfort	69 rooms
Super 8 - Monee	45 rooms

Motels	
Country Host Motel	24 rooms
Matteson Motel	19 rooms
Presidential Inn Motel	49 rooms

Total Number of Guest Rooms: 897

Area 6 – Tinley Park Hotels

Comfort Inn & Suites - Tinley Park	65 rooms
Country Inn & Suites - Tinley Park	99 rooms
Fairfield Inn - Tinley Park	62 rooms
Hampton Inn - Tinley Park	63 rooms
Hilton Garden Inn - Tinley Park	117 rooms
Holiday Inn Hotel & Convention Center - Tinley Park	202 rooms
LaQuinta Inn & Suites - Tinley Park	101 rooms
Sleep Inn Hotel - Tinley Park	72 rooms
Wingate by Wyndham	86 rooms

Total Number of Guest Rooms: 867

**Total Number of Chicago
Southland Guest Rooms: 5,215**



Chicago Southland

SPORTS

venue guide



PlayChicagoSouthland.com

708-895-8200 • 888-895-3211 • Fax 708-895-8288

Joel Koester, Sports Sales Manager

Sports@VisitChicagoSouthland.com

2304 173rd Street, Lansing, IL 60438