



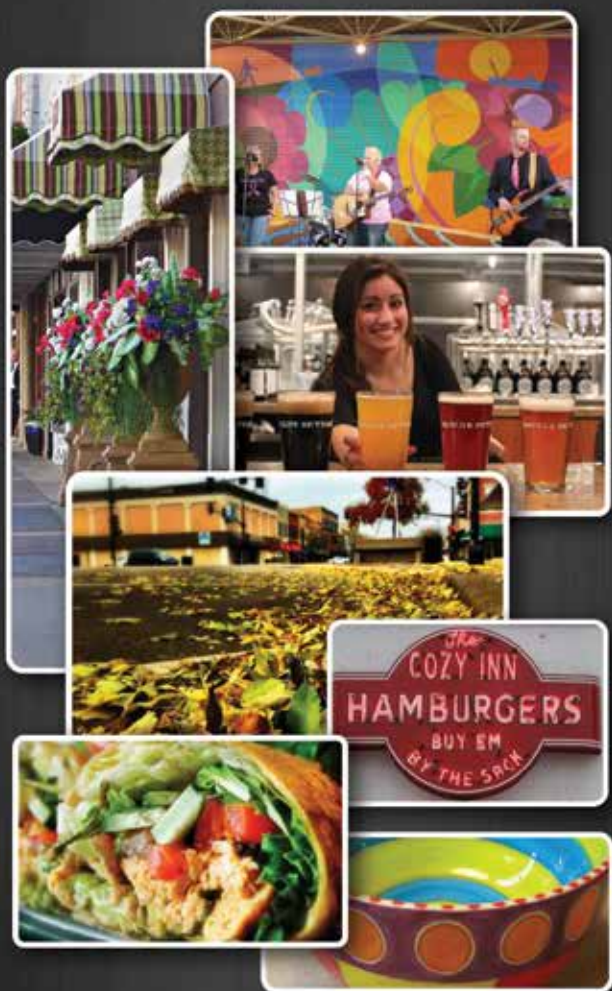
VisitSalina

Stay
Shop
Dine
See &
Do

Visit Salina, full of fabulous surprises!

Toll Free 877-725-4625

www.VisitSalinaKS.org



Explore, experience and enjoy
what Salina Downtown
has to offer!



www.salinadowntown.com

Table of Contents

Welcome	2
History	3
Uniquely Salina	4-5
Arts & Culture	6-8
Profile of Salina	9-10
Dining	12-14
Churches	15
Park, Recreation & Sports	16-19
Shopping	20
Meet & Compete!	21
Accommodations	22-23
City Map	24-25
Downtown Map	26-27
Agri-Tourism	28
Neighbors	29
Military Town	30
Transportation & More Info ...	31
Advertisers Index	32-33
Ads	34-48 & Cover
Events	Back Flap

- Area Code is 785 unless noted otherwise
- In general, businesses featured in this guide are Chamber members

Welcome to Salina

– the **right place** for warm hospitality, and the perfect blend of big-city amenities with small-town ambiance. Our location at the crossroads of I-70 and I-135 in central Kansas makes us an easy destination, and well worth the trip.

Whatever brings you here - making family memories, relaxing as a couple, having some fun on a 'girlfriends getaway' or bonding with a 'mancation,' it's the **right reason** to visit Salina.

The Visit Salina Guide is full of pleasant surprises. Salina is all about kids and fun, from Kansas' newest zoo, to more than 700 acres of parks, and a brand new water park. You'll discover a strong arts vibe throughout the community. More surprises are in store with our museums, cultural events, sports facilities, restaurants, shops, comfy accommodations and more. So...read on, the time to start planning is **right now!**

The City of Salina has created a wayfinding signage program especially for visitors. The design, by project artists, Ann Arkebauer, Salina and Chris Wilson, Kansas City, MO captures



Malls

Central High School

Hospital

Airport

the essence of Salina, from strong agricultural roots to a more whimsical cultural vibe. Watch for these signs - they'll lead you to points of interest throughout the community.



Psalms 1:1-3

Webster Conference Center

Corporate Events • High speed internet/AV services on site
Meetings • Team Building/Challenge course • Family Reunions
Summer Camps 4th thru 12th grades • Group Size 10-450
Full Food Service and On Site Catering • Overnight Accommodations

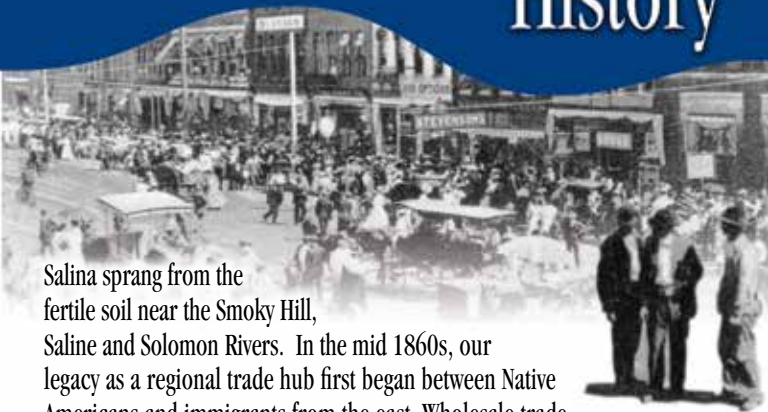
Recreational Activities

Swimming, Disc Golf, BB/VB Inside & Out,
Archery, Air Rifles, Ziplines



www.webstercc.org

History



Salina sprang from the fertile soil near the Smoky Hill, Saline and Solomon Rivers. In the mid 1860s, our legacy as a regional trade hub first began between Native Americans and immigrants from the east. Wholesale trade gave H.D. Lee (Lee Jeans) a start to his success. With the railroad came industrial growth, in industries from milling to manufacturing. That regional trade aspect continues today.

The population surged in the 1950s when the Smoky Hill Air Force Base (Schilling AFB) re-opened. Although the base closed in 1965, Salina prospered with the development of more industry and easy access to Interstates 70 and 135. The city thrives today thanks to a diverse economy and central location in Kansas.

To learn more about Salina's history...

...discover the heritage of the Smoky Hill region in permanent and changing exhibits at *Smoky Hill Museum*. 211 W. Iron, 309-5776, smokyhillmuseum.org

...experience our agricultural story through artifacts, displays, and events at *Yesteryear Museum*. 1100 W. Diamond Drive, 825-8473, yesteryearmuseum.com

For more information, research and a free wi-fi zone, visit the *Salina Public Library*. 301 W. Elm, 825-4624, salpublib.org

Play, experience, learn...

Free Admission

Museum & Store Hours
12-5 Tues-Fri
10-5 Sat
1-5 Sun



8th & Iron, Salina
785-309-5776
www.smokyhillmuseum.org

Uniquely Salina



Salina has many distinctive assets that create our community personality. The overall presence of arts and culture (pg 6-8), sports and parks (pg 16-19) and other community traits are featured in sections to follow. Here, we want to highlight a few things that are “Uniquely Salina” ...those must-see, must-do, can’t miss experiences that make us SALINA!





Explore Kansas' newest zoo and an 'interactive trip around the world' through the wildlife museum at *Rolling Hills Zoo*.

625 N. Hedville Road, 827-9488, rollinghillswildlife.com

Salina Downtown features an eclectic array of shops, eateries, theatres, museums, and art. Centered at Santa Fe & Iron Avenues, 825-0535, salinadowntown.com

The world renowned *Cozy Inn* has been serving up yummy slider burgers since 1922! 108 N. 7th, 825-2699, cozyburger.com

Our love of the arts culminates each June with the *Smoky Hill River Festival* in Oakdale Park, riverfestival.com. *SculptureTour Salina* downtown presents a collection of sculptures that changes annually. Vote for your favorite! sculpturetoursalina.com

Watch the pros at *Bright Built Hot Rods* customize beautiful autos. 5680 W. Old Highway 40, 823-0022, brightbuilthotrods.com



Arts & Culture



A defining aspect of Salina's lifestyle is our vibrant arts community. View contemporary art or visit an artist's studio. Rock out at an amazing concert, see a stunning play, or listen to a lush symphony. Take a history walk, watch an indie or foreign film, stroll through an enchanting zoo and wildlife museum, or sit in on a book discussion or poetry reading.

You'll discover surprising gallery spaces in theatres, municipal buildings, public library, campuses, private businesses and organizations. More than 50 distinct works of art in public places are presented for all to enjoy. Salina bursts at the seams with rural charm and natural beauty, yet entertainment with an urban sensibility flourishes! The result is a vibrant, charming community with a wide array of things to see and do.

The arts are important to us, as is evident through the work of *Salina Arts and Humanities*, 211 W. Iron, 309-5770, a department of the City of Salina. SAH administers programs in arts education, artist development, the Smoky Hill Museum, Smoky Hill River Festival, the City's Community Art & Design Program and a comprehensive community cultural plan.

The Arts are truly everywhere in Salina, accessible, available and affordable for all to enjoy. Works representing diverse artistic talents enhance our cultural tapestry through SAH and other programs. Small glimpses of this work are featured in the Visit Salina Guide. For more information about what you see and read about, and to access the cultural calendar, go to salinaarts.com.





SculptureTour Salina

is an exciting enhancement to the arts scene. This exhibition brings sculptures loaned by artists from across the country to our downtown, creating an outdoor arts installation which changes each spring. Come down, enjoy, and vote for your favorite sculpture. sculpturetoursalina.com

The *Salina Art Center* presents thought-provoking and innovative exhibitions of contemporary art and related activities, arts education and artists in residence among their programming. 242 S. Santa Fe, 827-1431, salinaartcenter.org

See the best in contemporary, independent, and foreign films screened nightly at the *Art Center Cinema*. 150 S. Santa Fe, 452-9868, salinaartcenter.org

Enjoy art in an unusual setting at Rolling Hills Zoo (pg 5). In addition to their zoo and museum, RHWA presents diverse changing exhibitions in the *Earl Bane Gallery*.

2011 marked 50 seasons of drama, comedy, music and mystery at *Salina Community Theatre*, with the completion of an extensive expansion project, featuring the new Sunflower Financial Theatre and a breath-taking new lobby and exterior. 303 E. Iron, 827-6126, salinatheatre.com

Enjoy a big line-up of world-class concerts!

The
Stiefel Theatre
for the Performing Arts

www.stiefeltheatre.org
785-827-1998



The Historic Stiefel Theatre
151 S. Santa Fe 785-827-1998
Downtown Salina Box Office M-F 9-5

Changing lives through music!
Salina
symphony
www.salinasymphony.org
785-823-8309





A \$2.86 million restoration in 2003 re-established the *Stiefel Theatre for the Performing Arts* – 151 S. Santa Fe, 827-1998, stiefeltheatre.org, as a cornerstone of cultural life in Salina. Presenting classic films, big-name concerts, comedy, dance and children's shows, the Stiefel is also home to the *Salina Symphony*. 823-8309, salinasymphony.org

The *Smoky Hill River Festival* is Salina's signature event, held the second full weekend of June each year. Oakdale Park is transformed into an arts mecca, with the Fine Arts Show, Four Rivers Market, and fabulous entertainment. Immerse yourself in musical genres for every taste – from country to rap, rock to Celtic, blues to reggae – performed on multiple stages, Children's activities, and of course, FOOD, round out this experience! 309-5770, riverfestival.com

On the *First Thursday* of each month, stroll through exhibits, studio space, enjoy music, lectures and events, all downtown! In the spring and fall, 'brown bag it' and enjoy outdoor *Art a la Carte* concerts downtown on Fridays. *Eric Stein Stage* in Oakdale Park is a favorite outdoor venue, particularly in the summer for the *Salina Municipal Band* concerts (Tuesdays) and "That's Entertainment" concert series (Thursdays).

to create exchanges among artists, and audiences that reveal life. The exchange among art, SALINA **artcenter.org** reveals life to create exchanges among art, artists and audiences that reveal life to create ex

GALLERIES

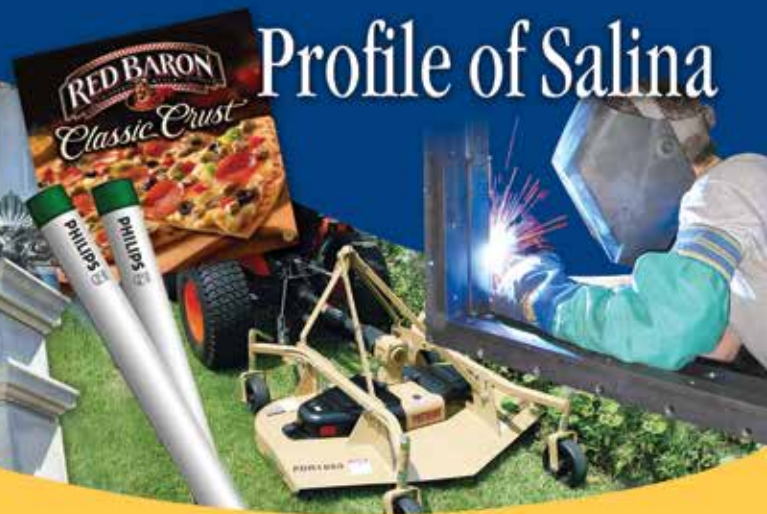
242 S. Santa Fe, Salina, KS 67401 | 785.827.1431
Gallery hours: wed-sat 12-5 p.m., sun 1-5 p.m., & by appointment
ARTery hours: wed-sun, 11-5 p.m.
email: info@salinaartcenter.org

CINEMA

150 S. Santa Fe, Salina, KS 67401 | 785.452.9868

WAREHOUSE

149 S. 4th St., Salina, KS 67401 | 785.827.1431



Profile of Salina

The Economy

Salina is a progressive community with an excellent standard of living. At the junction of two major interstates, the community has built upon its agricultural roots diversifying into the global economy. Salina manufacturing facilities produce more frozen pizzas, lead acid auto batteries and fluorescent lighting than anywhere else in the world. We produce equipment to pave roads and buses to drive on them. We design and build machinery for the agriculture industry, and the valves to process our grain production. We produce aviation components for planes that can land here, and we train pilots, engineers and military personnel who fly and maintain them.

Salina is cited as one of the best places to raise kids in the country. Our cost of living is competitive, and our ability to attract retail trade from outside the community is the third highest in Kansas. We are a great place to live and work, which makes this a great place to visit!

Salina Area Chamber of Commerce, 120 W. Ash, 827-9301, salinakansas.org

Education is a top priority in Salina, with both public and private institutions from elementary through post-secondary levels. There exists the unique opportunity to go from K-12 to earning an MBA or MD, all in this community of 50,000 people. Salina Area Tech is ranked among the top 10% of technical colleges in America. St. John's Military School has the highest parental satisfaction rating of private schools in Kansas.

Public Schools:

- Salina USD 305, 1511 Gypsum, 309-4700, usd305.com

Private Schools:

- Superintendent of Catholic Schools, 304 E. Cloud, 827-4200, salinadiocese.org
- Salina Christian Academy, 1009 Highland Avenue, 452-9929, salinachristianacademy.org
- St. John's Military School, 110 E. Otis Avenue, 823-7231, sjms.org

Profile of Salina



Post Secondary Education:

- Brown Mackie College – Salina, 2106 S. Ninth, 825-5422, brownmackie.edu/salina
- K-State Salina, 2310 Centennial Road, 826-2600, salina.k-state.edu
- Kansas Highway Patrol Training Academy, Troop J Headquarters, 2025 E. Iron, 822-1700, kansashighwaypatrol.org
- Kansas Wesleyan University, 100 E. Claflin Avenue, 827-5541, kwu.edu
- KU School of Medicine-Salina, 400 S. Santa Fe, 452-7451, salina.kumc.edu
- Salina Area Technical College, 2562 Centennial Road, 309-3100, salinatech.edu

Health Care

Salina has enjoyed tremendous growth in medical facilities, specialties and services, making this community a regional center for medical care in north central Kansas. The continued development of the Downtown Medical District, including the recent addition of the KU School of Medicine program, illustrates the emphasis we place on health care.

In case of emergency, always dial 911. Should you unexpectedly require care during your visit, visit these emergent care facilities:

- Salina Regional Health Center, 400 S. Santa Fe, 452-7000
- StatCare Family Medical Clinic & Minor Emergency Center, 1001 S. Ohio, 827-6453

Because life's not child-proof.



Our board-certified pediatricians provide exceptional care for infants, children and adolescents.

Call 785-825-CARE (2273).

Salina Pediatric Care

 Salina Regional Health Center

501 S. Santa Fe, Suite 100 • Salina • www.salinapediatriccare.com



Salina Women's Clinic

 Salina Regional Health Center

We promise. We deliver.

In addition to delivering lots of babies, we also deliver top-notch, personalized medical care for women.

- Da Vinci Surgical System
- BabyView 3-D & 4-D Sonograms
- Phentermine Weight Loss Plan

Call us today and join our growing family. We're accepting new patients.

Dr. Merle 'Boo' Hodges
Dr. Christopher Graber
Dr. Molly Carroll



135 East Claflin | 785.827.7996 | SalinaWomensClinic.com



Dining

Food, glorious food! From sandwiches to steaks, and ice cream to lattes, Salina has anything you might have a taste for. If you are looking for something 'local' watch for the ●.

American/Family

Applebee's Neighborhood Grill & Bar

2875 S. Ninth • 827-8385

● **Bayard's Café**

540 S. Broadway Blvd • 825-4351

Chili's Grill & Bar

2255 S. Ninth • 820-8300

Coyote Canyon

2351 S. Ninth • 823-2787

Huddle House

2250 N. Ohio • 825-5806

IHOP

2273 S. Ninth • 309-0020

535 W. Diamond Dr. • 825-7900

Iron Skillet

2301 N. Ninth • 493-8438

● **Jim's Country Style Chicken**

649 S. Broadway • 827-5076

● **Russell's Restaurant**

649 Westport Blvd. • 825-5733

Western Sizzlin

1708 W. Crawford • 827-5078

Asian

● **Daimaru Steak House**

3045 S. Ninth • 820-5500

● **Hong Kong Buffet**

2515 Market Pl. • 820-8683

Imperial Garden Express

844 E. Crawford • 827-8688

● **Seoul USA Korean Restaurant**

2100 S. Ninth • 404-2114

Bakeries, Coffee Shops, Delis & Desserts

● **Ad Astra Books and
Coffee House**

141 N. Santa Fe • 833-2235

**Jimmy John's Gourmet
Sandwiches**

1661 S. Ohio • 820-5727

● **Mokas Coffee**

916 E. Crawford • 825-6100

Mr. Goodcents Subs & Pasta

2344 Planet • 825-1945

Starbucks Coffee Company

2315 S. Ninth • 823-2245

● **Sugar P's Cupcakery**

145 S. Santa Fe • 643-1457

see ad page 35

Quizno's

1000 E. Crawford • 309-0600

Yogurtini

1661 S. Ohio St., Ste B • 493-8404

Bar & Grill

● **Maggie Mae's**

409 S. Broadway • 825-9829

Barbecue

● **Hickory Hut BBQ**

1617 W. Crawford • 825-1588



Hog Wild Pit Bar-BQ

2525 Market Pl. • 825-2222

Breweries**● Big John's Brewing Co.**

2445 S. Ninth • 404-3228

● Blue Skye Brewery & Eats

116 N. Santa Fe • 404-2159

Fast Food/To Go**● Bogey's**

1417 S. Ninth • 823-8066

Braum's Ice Cream & Dairy Stores

1800 W. Crawford • 823-5459

Burger King

316 E. Iron • 823-1527

2650 S. Ninth • 827-1730

● Cozy Inn

108 N. Seventh • 825-2699

see ad page 14

Dairy Queen

321 N. Ninth • 823-6109

1000 Buckeye • 825-5150

Freddy's Frozen Custard

2420 S. Ninth • 827-0900

● Gourmet To Go

1402 E. Iron • 820-8888

McDonald's

701 S. Broadway • 825-5301

1100 E. Crawford • 825-2511

2236 Planet • 825-6775

Sonic Drive-In

310 S. Santa Fe • 825-9614

2615 S. Market Pl. • 825-8663

Spangles Restaurant

1720 W. Crawford • 827-7040

Italian/Pizza**● Coops Pizzeria**

123B S. Santa Fe • 823-5556

Little Caesars Pizza

645 E. Crawford E5 • 452-9999

● Martinelli's Little Italy

158 S. Santa Fe • 826-9190

Olive Garden

2820 S. Ninth • 827-4266

Papa John's Pizza

1650 S. Ohio • 827-7575

Papa Murphy's

2000 S. Ninth, Ste. C • 827-7900

● The Scheme

123 N. Seventh • 823-5125

see ad page 34

Mexican**● El Atoron**

117 N. Santa Fe • 823-1200

● Gutierrez Restaurant

640 Westport Blvd • 825-1649

Jalisco Mexican Restaurant

2601 Market Pl. • 833-2388

Pancho's

2300 Planet Ave. • 309-0909

Taco John's

303 S. Santa Fe • 825-6382

● The Original Lenore's LaCasita

2338 Planet Ave. • 823-2102

Sports Bars**● Boomers**

116 S. Broadway • 404-2630

● Legends Sports Bar & Grill

2110 W. Crawford • 825-2111

● Speakeasy

2030 S. Ohio • 823-7687

Steaks & Seafood**Logan's Roadhouse**

3050 Riffel Dr. • 309-0363

LongHorn Steakhouse

2590 S. Ninth • 823-2201

Red Lobster

2925 S. Ninth • 825-0837

● Tucson's Steakhouse**Saloon & Grill**

2750 S. Ninth • 820-9595

see ad page 48

Catering

- Applemint Catering • 479-1910
- Home Catering & Concessions
820-6037
- Knackies Meats & Sweets
620-504-6030
- Loft Catering • 820-8888
- Rubbing Butts BBQ Team
827-6006
- Skip's Concessions • 488-7444

In Neighboring Communities

- The Linger Longer Soda
and Sandwich Shop
119 N. Nelson, Bennington, KS
378-SODA
- Renaissance Café
210 N. Center, Assaria, KS • 822-6750
- Sandstone Saloon
Brookville, KS • 225-6715



Thank You For 92 Years & Counting!

*Featured #69 on
Travel Channel's*

101
TASTIEST
PLACES TO
CHOWDOWN

*Ranked #6 on
America's
Top 10
Hamburgers*

**Only Restaurant in State of Kansas with
Diamond Rating from AAA**

**Salina's Most Famous Restaurant!
785-825-2699**



108 North 7th Street • Salina, KS

WWW.COZYBURGER.COM

Churches

For many, worship can be an important part of the visitor experience. Salina is home to more than fifty churches representing many denominations. We hope that the following information about Chamber member churches will provide you an opportunity to worship.

All Saints Orthodox Church

2818 Scanlan Ave 823-3735

Christ Episcopal Cathedral

138 S. Eighth St. 827-4440

Christ the King Lutheran Church

111 W. Magnolia 827-7492

First Christian Church

2727 E. Crawford 825-8296

First Presbyterian Church

308 S. 8th St. 825-0226

First United Methodist Church

122 N. Eighth 825-0228

Living Word Int’l Ministries

915 Smith Ave 452-8953

Redeemer Lutheran Church

743 E. Magnolia 827-8195

Sacred Heart Cathedral

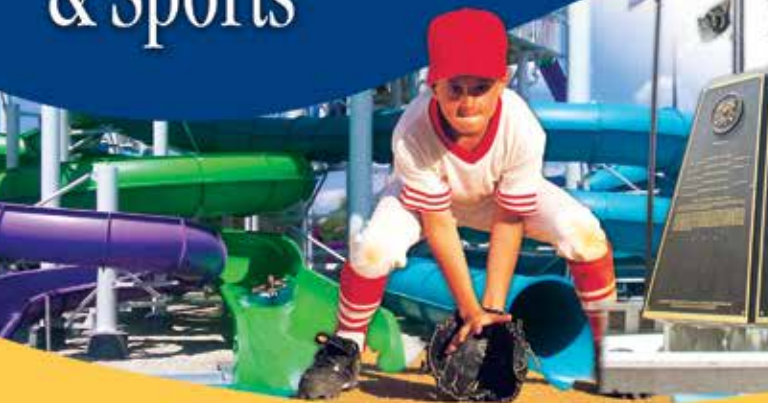
118 N. Ninth. 823-7221

Trinity Lutheran Church

702 S. Ninth. 823-7151



Parks, Recreation & Sports



More than 700 acres of City park property are ready for you to explore! Here, we've highlighted what many consider to be Salina's 'Primary Parks' -- those larger parks that provide either services very specific to that location, or a fairly comprehensive set of amenities in one location. For more information about our 30 park sites, to reserve a neighborhood center or picnic shelter, contact Salina Parks & Recreation, 309-5765, Monday-Friday 8am-5pm, excluding holidays.

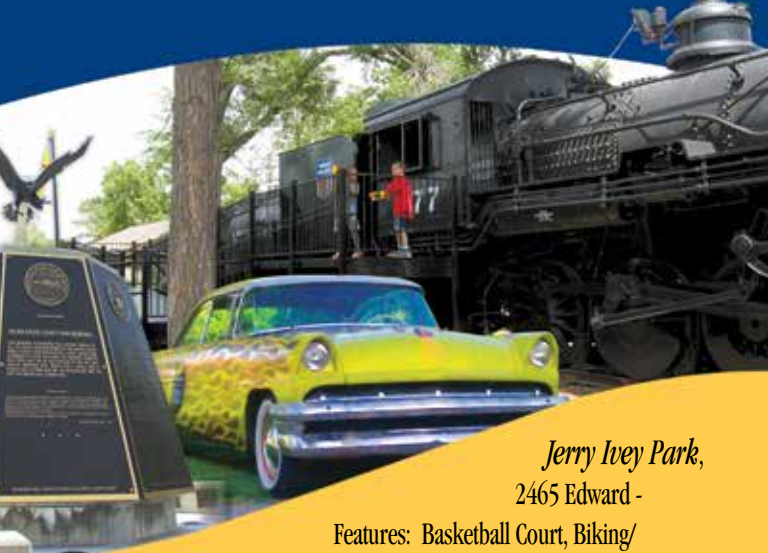
Bill Burke Park, 1501 W. Crawford - Features: 5 Lighted/3 Unlighted Baseball/Softball Diamonds; 6 Soccer Fields, Fishing, Picnic Shelters, Playground

Centennial Park, 746 Comanche - Features: Friendship Center, Basketball Court, Skateboard Area, Sand Volleyball Court, Picnic Shelters, Playground, Water Playground

East Crawford Recreation Area, 841 Markley - Features: 6 Lighted/2 Unlighted Baseball/Softball Diamonds including Dean Evans Stadium; Picnic Shelter, Playground

Indian Rock Park, 1500 Gypsum - Features: Indian Rock Lodge, Fishing, Nature Trail/Area, Picnic Shelters, Sledding Hill

'Park it' a while in Salina!



Jerry Ivey Park,
2465 Edward -

Features: Basketball Court, Biking/
Jogging Path, Gazebo/Stage, Tennis Courts, Picnic Shelters, Water
Playground, Compassionate Friends Children's Memorial.

Kenwood Park, 821 Kenwood Park Dr. – Features: Saline County
Livestock & Expo Center, Bicentennial Center, Kenwood Cove Aquatics Park,
Picnic Shelters, Playground

Lakewood Park, 1323 E. Iron – Features: Lakewood Discovery Center,
Fishing, Disc Golf, Trails, Picnic Areas, Playground

Oakdale Park, 730 Oakdale Dr. – Features: Eric Stein Stage, Smoky Hill
River Festival (June), KKOA Leadsled Car Show (July), Botanical Garden,
8 Tennis Courts, Fishing, Picnic Shelters, Playground

Oxbow Park, 901 Faith Dr. – Features: Biking/Jogging Path, Soccer
Field, Picnic Shelters

Salina Soccer Complex, 2100 E. Magnolia – 5 Soccer Fields, Biking/
Jogging Path, Fishing, Picnic Shelter, Playground

Sunset Park, 700 W. Sunset Dr. – Features: Saline County War Memorial,
Basketball Court, Tennis Courts, Baseball/Softball Fields, Botanical Garden,
Horseshoe Pits, Picnic Shelters, Playground

Thomas Park, 1525 N. 9th – Features: Camping, Dump Station,
Electricity, Disc Golf, Picnic Shelters, Playground

Golfers get into the swing of things through most of the year in Salina.
We boast three great 18-hole courses!

Salina Municipal Golf Course is open to the public, every day,
weather permitting. This 18-hole course also features “The First Tee”, a par
3 course especially for beginning golfers. Cart and club rental are available.
2500 E. Crawford, 826-7450, golf.salina.org

Parks, Recreation & Sports



GreatLife Golf & Fitness is a membership facility, with reciprocal agreements in place with other GreatLife network courses.

1800 S. Marymount Road, 827-8585, greatlifegolf.com

Salina Country Club is a private organization with limited reciprocal access to their challenging course. 2101 E. Country Club Road, 827-6131, salinacountryclub.com

Kenwood Cove Aquatics Park Exciting slides, lazy river, kiddie play area and lap pool, late May through mid-August. 701 Kenwood Park Drive, 826-7430, kenwoodcove.com

All Star Lanes Bowling – Bowling, video games, billiards, food, refreshments. 624 S. Broadway, 827-6730, allstarlanesks.com



**Spend the day at
Kenwood Cove**

Salina's new aquatic
park featuring

- 7 Slides • Lazy River
- Wave Pool • Lap Pool
- Kiddie Area

Opening late May - August

**Salina's
Kenwood
Cove**

www.kenwoodcove.com
785-309-5765



Starlite Skate Center – The mirrored ball says it all in this traditional roller skating rink. 2661 Market Place, 827-6861, starliteskate-salina.com

Jumpin' Joes Family Fun Center – Mini golf, laser tag, go karts, video, kiddie climb. 1634 Sunflower Lane, 827-9090, jumpinjoes.com

Prairie Harbor Recreation – Off road site for dirt bikes, ATVs, UTVs, Bicycles, R/C cars. 2003 N. Halstead Road, 492-8121, prairieharbor.com

Salina Bombers – This Champions Professional Indoor Football League team calls the Bicentennial Center home. SalinaBombers.com

Salina Sirens Roller Derby – All female flat track roller derby league, with Summer and Fall bouts at the Bicentennial Center. salinasirensrollerderby.com

Get Your Putt On

**2500 E. Crawford | www.salinamuni.com
785-826-7450**

18-hole AND 6-hole Course
Driving Range and Practice Greens
"Sunflower Golf Trail" Member
Club Rental Available

Salina
Muni

Shopping

Beyond their primary reason for travel – perhaps an event, a meeting, or to see family – the #1 activity of a visitor is usually eating, followed closely by SHOPPING! You'll find many opportunities to do just that while you visit Salina. Quaint little specialty shops can be found across the community, featuring everything from oak furnishings and décor, to sports apparel and equipment or shoes.



In our historic *Salina Downtown*, a collection of quirky local shops of jewelry, gifts, toys, baby apparel, pottery and clothing beckon that shopper in YOU! Downtown is also an arts and entertainment center of the community, with theatre, museums, and public art and special events throughout the year. (see map pgs 26-27) Salina Downtown, Inc., 120 W. Ash, 825-0535, salinadowntown.com

National favorites like The Buckle and JC Penney are among 62 opportunities for retail therapy at *Central Mall*! Grab a quick bite, and a movie at 10-plex cinema. Play area and aquarium of Kansas fishes provide family fun as well. 2259 S. Ninth, 825-4305, centralmallsalina.com

Hundreds of shopping experiences await in Salina. To search for specific retail stores or learn more, see the advertising section of this visitors guide, or contact the *Salina Area Chamber of Commerce*, 120 W. Ash, 827-9301, SalinaKansas.org (Business Directory).



SALINA Bicentennial CENTER

Live Events, Conventions & Meetings



Visit www.BicentennialCenter.com for more information or call 785-826-7200

800 The Midway Salina, KS 67401

GLOBAL SPECTRUM

Meet & Compete!

Visit Salina works with event planners to create customized service packages to address their specific needs. The hospitality community understands those needs, and strives to meet them with comfortable accommodations, great food and excellent service.

Venues ready to accommodate groups from 5-5,000 attendees provide choices at varying price points, in diverse environments. What works for you? Perhaps it's a retreat setting like that of Webster Conference Center; something unique like the Conference Center at Rolling Hills Zoo; the more traditional environments of a hotel; or the expansive Arena and recently renovated meeting spaces at the Salina Bicentennial Center. Baseball and softball fields, a new soccer complex, gymnasium spaces...it's all here!

If you have a sports event, meeting, or convention to plan, we want to host it! Check out our *Meeting Facilities* and *Sports Facilities Guides* at VisitSalinaKS.org. Contact our staff:

Visit Salina, 120 W. Ash, PO Box 586, Salina, KS 67402-0586, 877-725-4625



Accommodations

*Price Point: Based on avg publicized rates for standard room
 \$\$\$\$ - \$110+ | \$\$\$ - \$85-\$109 | \$\$ - \$60-\$84 | \$ - \$59 or less

Hotels & Motels	
Courtyard by Marriott	3020 Riffel Dr. - 309-1300
Hampton Inn	401 W. Schilling Rd. - 823-9800
Holiday Inn <i>coming late 2014!</i>	<i>S. Ninth corridor - near I-135</i>
Holiday Inn Express & Suites	755 W. Diamond Dr. - 404-3300
AmericInn	1820 W. Crawford - 826-1711
Baymont Inn & Suites	1740 W. Crawford - 823-6900
Candlewood Suites	2650 Planet Ave. - 823-6939
Comfort Suites	715 W. Schilling Rd. - 404-6944
Country Inn & Suites	2760 S. Ninth St. - 827-1271
LaQuinta Inn & Suites	201 E. Diamond Dr. - 827-9000
Sleep Inn & Suites	3932 S. Ninth St. - 404-6777
Ambassador Hotel (new owner/franchise pending)	1616 W. Crawford - 823-1739
America's Best Inn	429 W. Diamond Dr. - 825-2500
Best Western Plus	745 W. Schilling Rd. - 493-9800
Days Inn (Near I-70)	407 W. Diamond Dr. - 823-9791
Days Inn (Near I-135)	632 Westport Blvd. - 827-9315
EconoLodge	636 Westport Blvd. - 820-8665
Quality Inn & Suites	2110 W. Crawford - 825-2111
Super 8	705 W. Schilling Rd. - 404-2771
Super 8 I-70	120 E. Diamond Dr. - 823-8808
Airliner Motel	781 N. Broadway - 827-5586
Ambassy Motel	217 S. Broadway - 825-7265
America's Best Value Inn	2403 S. Ninth St. - 827-5511
Best Inn Motel	1220 W. North St. - 452-9666
Budget King Motel	809 N. Broadway - 827-4477
Howard Johnson	222 E. Diamond Dr. - 404-1870
Log Cabin Motel	440 N. Broadway - 825-4652
Motel 6	635 W. Diamond Dr. - 827-8397
Rodeway Inn	1846 N. Ninth St. - 827-0356
Starlite Motel	211 E. Pacific - 825-5439
Travelers Lodge	245 S. Broadway - 827-9351
Value Inn & Suites	1640 W. Crawford - 404-3206
Village Inn	453 S. Broadway - 827-4040
* Reduced rate after 7 days	



Welcome to Togetherness Country.

Nothing brings a family together like free breakfast on the ultimate road trip. Visit countryinns.com to find a stay that satisfies the whole family, and we'll have you saying, "I love this Country."

Complimentary breakfast — Indoor pool & whirlpool
 Fitness center — Meeting space

COUNTRY
 INN & SUITES
 BY CARLSON

I love this Country.

**2760 South 9th Street
 Salina, KS 67401**

800-456-4000 • 785-827-1271 • countryinns.com/salinaks

	Price Point*	Free Breakfast	Restaurant or Lounge	On Site Fitness	Business Center	Pool (In or Out)	Guest Laundry	Pets Program - Call	Meeting Space	Weekly Rates
	\$\$\$\$		X	X	X	In	X		X	*
	\$\$\$\$	X		X	X	In	X			X
	\$\$\$\$									
	\$\$\$\$	X		X	X	In	X		X	X
	\$\$\$	X				In		X		
	\$\$\$	X			X	In				
	\$\$\$			X	X		X	X	X	X
	\$\$\$	X		X	X	In	X		X	
	\$\$\$	X		X	X	In	X		X	
	\$\$\$	X		X	X	In	X	X	X	
	\$\$\$	X		X	X	In	X	X		X
	\$\$	X	X	X	X	In	X	X	X	X
	\$\$	X					X	X		X
	\$\$	X		X	X	In	X	X		
	\$\$	X				In		X		
	\$\$	X			X			X		X
	\$\$	X			X	In		X	X	X
	\$\$	X			X	In	X	X		X
	\$\$	X	X		X	In	X	X	X	X
	\$\$	X		X	X	In	X	X		X
	\$\$	X			X	In	X	X		
	\$				X			X		X
	\$						X	X		X
	\$	X			X	Out	X	X		X
	\$							X		X
	\$				X			X		X
	\$	X				Out		X		X
	\$							X		X
	\$					Out	X	X		X
	\$	X	X	X	X	In	X	X	X	X
	\$							X		X
	\$					Out		X		X
	\$							X		X
	\$						X	X		X

Salina's hospitality community is ready to welcome you 'home'! This amenities grid will be helpful as you consider which of the many options for accommodations best fits you!



Bed & Breakfast Inn

C & W Ranch 4000 Halstead Rd., Smolan, KS 668-2352

Camping

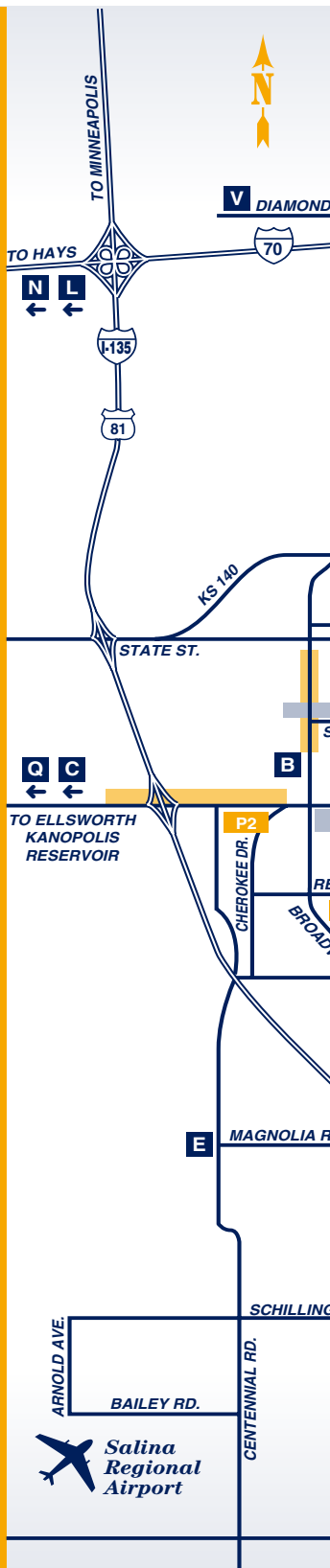
KOA Campground of Salina 1109 W. Diamond Dr. 827-3182

Webster Conference Center 2601 N. Ohio Street 827-6565

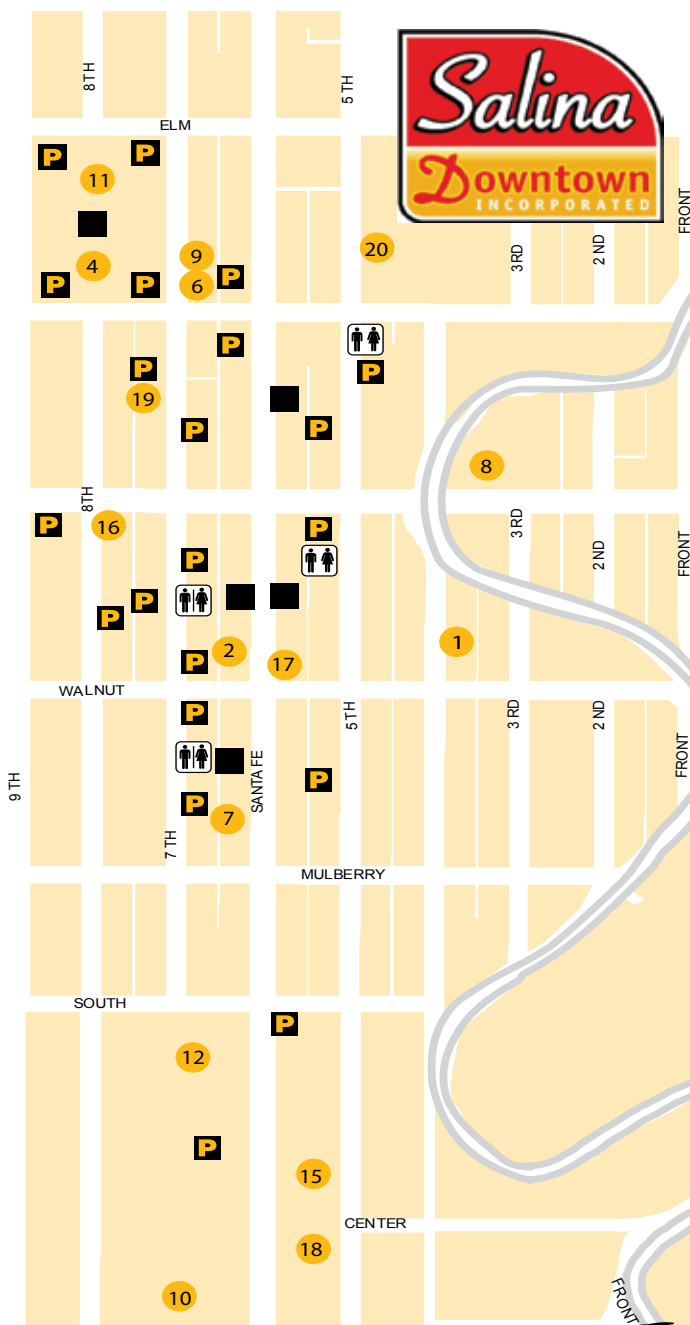


Points of Interest

- A Visit Salina/Chamber of Commerce**
120 W. Ash St., 785-827-9301
 - B All Star Lanes**
624 S. Broadway Blvd., 785-827-6730
 - C Bright Built Hot Rods**
5680 W. Old Highway 40, 785-823-0022
 - D In/Near Downtown**
Salina Downtown, Inc., 785-825-0535
 - Art Center Cinema**
150 S. Santa Fe Ave., 785-452-9868
 - Salina Art Center**
242 S. Santa Fe Ave., 785-827-1431
 - Salina Community Theatre**
303 E. Iron Ave., 785-827-6126
 - Salina Public Library**
301 W. Elm St., 785-825-4624
 - SculptureTour Salina**
Santa Fe Ave., 785-825-0535
 - Smoky Hill Museum**
211 W. Iron Ave., 785-309-5776
 - Stiefel Theatre for the Performing Arts**
151 S. Santa Fe Ave., 785-827-1998
 - E K-State Salina**
2310 Centennial Rd., 785-826-2600
 - F Kansas Highway Patrol Training Center**
2019 E. Iron Ave., 785-827-4437
 - G Golf** (See list below)
 - H Salina Regional Health Center**
400 S. Santa Fe Ave., 785-452-7000
 - I Kansas Wesleyan University**
100 E. Claflin Ave., 785-827-5541
 - J Kenwood Cove Aquatics Park** (Summer)
701 W. Kenwood Park Dr., 785-826-7430
 - K Lakewood (Park) Discovery Center**
1323 E. Iron Ave., 785-826-7335
 - L Prairie Harbor Recreation**
2002 N. Halstead Rd, 785-492-8121
 - M Prairie Lavender Farm**
69 Alpine Ridge Ln., Bennington, KS
785-488-3371
 - N Rolling Hills Zoo**
625 N. Hedville Rd., 785-827-9488
 - O Salina Bicentennial Center**
800 The Midway, 785-826-7200
 - P Parks** (See list below)
 - Q Salina Speedway**
2841 S. Burma Rd., 785-713-2339
 - R Saline County Livestock & Expo Center**
900 Greeley Ave., 785-826-6531
 - S St. John's Military School**
110 E. Otis Ave., 785-823-7231
 - T Starlite Skate Center**
2661 Market Place, 785-827-6861
 - U Webster Conference Center**
2601 N. Ohio St., 785-827-6565
 - V Yesteryear Museum**
1100 W. Diamond Dr., 785-825-8473
-
- G1 GreatLife Golf & Fitness**
1800 S. Marymount Rd.
Pro Shop, 785-827-8585
 - G2 Salina Country Club Golf Course**
2101 E. Country Club Rd.
Pro Shop, 785-827-6131
 - G3 Salina Municipal Golf Course**
2500 E. Crawford St., 785-826-7450
 - P1 Bill Burke Sports Complex**
1501 E. Crawford St.
 - P2 Centennial Park** 746 Commanche Ave.
 - P3 Dean Evans Stadium** 841 Markley Rd.
 - P4 East Crawford Complex** 841 Markley Rd.
 - P5 Indian Rock Park** 1500 E. Gypsum Ave.
 - P6 Jerry Ivey Park** 2465 Edwards St.
 - P7 Kenwood Park** 821 Kenwood Dr.
 - P8 Lakewood Park** 1323 E. Iron Ave.
 - P9 Oakdale Park** 730 Oakdale Dr.
 - P10 Salina Stadium** 650 E. Crawford St.
 - P11 Sunset Park** 700 W. Sunset Dr.
 - P12 Thomas Park** 1601 N. Ninth St.
 - P13 Salina Soccer Complex** 2100 E. Magnolia Rd.



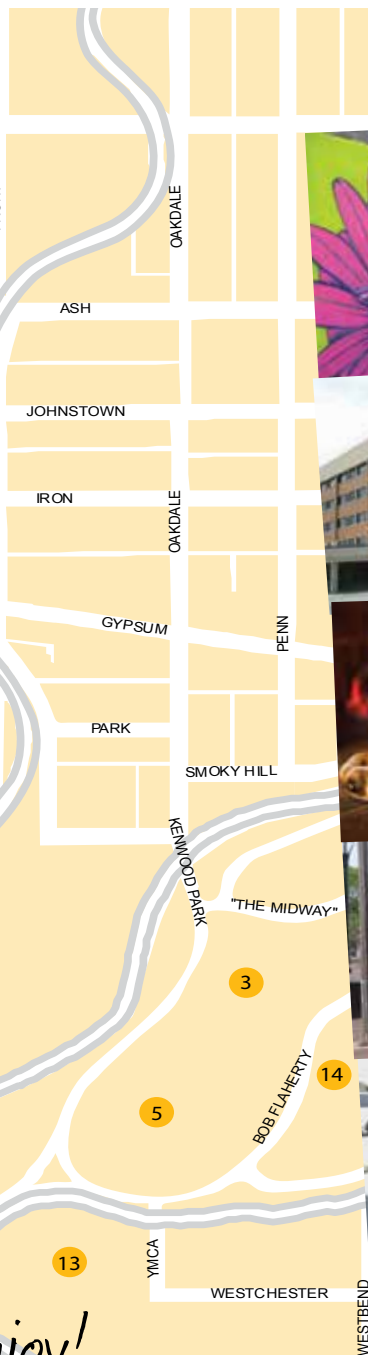




Explore, Experience and Enjoy

- | | | |
|-----------------------------------|----------------------------------|-------------------------|
| 1 Art Center Warehouse | 8 Salina Community Theatre | 16 Smoky Hill Museum |
| 2 Art Center Cinema | 9 Salina Downtown, Inc. | 17 Stiefel Theatre |
| 3 Bicentennial Center | 10 Salina Medical Arts Building | Performing Arts Center |
| 4 City/County Building | 11 Salina Public Library | 18 Tammy Walker Center |
| 5 Kenwood Cove Aquatic Park | 12 Salina Regional Health Center | 19 The City Teen Center |
| 6 Salina Area Chamber of Commerce | 13 Salina YMCA | 20 U.S. Post Office |
| 7 Salina Art Center | 14 Salina County Expo | |
| | 15 Santa Fe Medical Plaza | |

P Public Park
■ Plaza

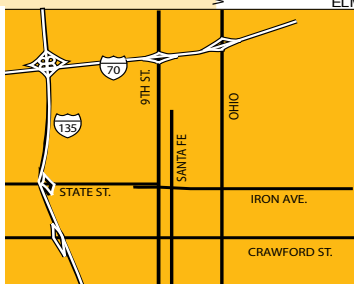


OHIO



Enjoy!

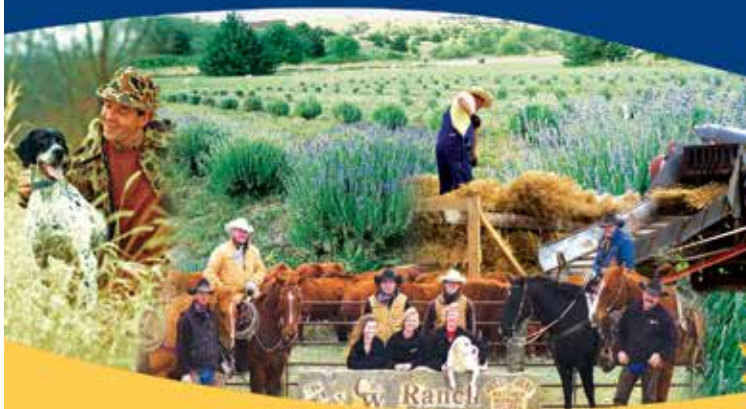
Museum
re for the
Arts
er Cancer Center
n Center
ce
king



If traveling on I-70, take Exit 252, turn south on 9th Street, then turn east onto Elm St., Ash St., Iron Ave or Walnut St., and travel 3 blocks to Santa Fe Ave.

If traveling on I-135, take Exit 92, turn east onto Crawford St., travel 1.5 miles to Santa Fe Ave.

Agri-Tourism



Don't visit Kansas without taking advantage of our adventures in "Agri-Tourism." North of Salina, *Prairie Lavender Farm* near Bennington, is committed to producing select handmade lavender products. 69 Alpine Ridge Lane, 488-3371, prairielavenderfarm.com

Enjoy fresh farm veggies, meats, flowers, fruits and MUSIC at the *Farmer's Market* in the Waters True Value/Earthcare parking lot on S. Ohio. Open 2nd weekend of May – 1st weekend of October each year.

As you head south into Salina, be sure to stop at *Yesteryear Museum* to learn about agricultural heritage through events and exhibits. (pg 3)

Now it's time to get down to work at *C&W Ranch*, south of Salina. This family ranch operation doubles as a B&B and hunting lodge. This could be your chance for a real ranch experience. 4000 S. Halstead Road, Smolan, KS, 668-2352, cwranch.com

The Land Institute has worked more than 30 years addressing sustainability issues of agriculture. LIFE magazine named founder Wes Jackson as likely to be among "100 of most important Americans of the 20th century." 2440 E. Water Well Road, 823-5376, landinstitute.org

Ag-centered events are part of Salina's perennial calendar. Late January brings the No-till on the Plains Winter Expo (notill.org) which has called the Salina Bicentennial Center home for many years. Back at the Center in March, the Chamber presents the Mid-America Farm Expo (827-9301, salinakansas.org), the largest spring ag show in the Midwest. Enjoy the Lavender Harvest Festival each June.

Kenwood Park's *Saline County Livestock and Expo Center* is the home of the summer Tri Rivers Fair and Rodeo, and several livestock shows each year. 900 Greeley Ave., 826-6531, saline.org/ExpoCenter In the fall, the *Yesteryear Museum* celebrates our agricultural heritage with their Antique Engine and Steam Show, and the Prairie Festival is presented by The Land Institute.

Neighbors



Our central location in Kansas makes Salina the perfect place for 'hub and spoke' experiences. Once you've settled in and enjoyed Salina's attractions, visit our neighboring communities too!

Abilene – 27 miles east • Boyhood home of President Dwight D. Eisenhower; Kansas Cattle Town; Abilene CVB, 800-569-5915, abilenekansas.org

Lindsborg – 20 miles southwest • Little Sweden USA! Lindsborg CVB, 888-227-2227, visitlindsborg.com

Ellsworth – 30 miles west • Kansas Cattle Town; Kanopolis Lake; Ellsworth-Kanopolis Chamber of Commerce, 472-4071, ellsworthkschamber.net

Minneapolis – 20 miles north • Rock City; Ottawa County Museum; Minneapolis Area Chamber of Commerce, 392-3068, minneapoliskansaskansas.org

Learn more about the Sunflower State, order a state map and Kansas Visitors Guide from: Kansas Travel and Tourism, www.TravelKS.com, 800-252-6727



your connection to digital media

301 W. Elm • (785) 825-4624 • www.salinapubliclibrary.org

Military Town



Salina has a strong military history, perhaps most notably when Schilling Air Force Base was operational from WWII through the mid-1960s. Schilling served as a Strategic Air Command (SAC) base. Schilling AFB closed in 1965, and with that came the exodus of those service families. However, in recent years, Salina has again emerged as a 'military town'. This emergence is evident through the significant capital investment of more than \$35,000,000 in the last few years to create the *Great Plains Joint Training Center (GPJTC)*. Combining the assets of the Kansas Air and Army National Guard, the GPJTC affords military and civilian organizations an unprecedented opportunity to function jointly using real-world technology to train. The center includes the Smoky Hill Range Complex, the Kansas Reg'l Training Institute, and 'Crisis City' - a new Homeland Security Public Safety training facility. St. John's Military School is also based in Salina.

Many local businesses participate in the Patriot Business Program, which promotes discounts for military families. For more information, 'Like' Salina Military Affairs Council on Facebook.

BROTHERHOOD THAT LASTS A LIFETIME

- HONOR
- INTEGRITY
- RELIGION
- PERSONAL GROWTH
- SELF DISCIPLINE
- STRUCTURE
- RESPONSIBILITY

**Now Enrolling
Grades 6-12**



STJOHN'S
MILITARY SCHOOL

www.sjms.org

Transportation & Information



Air Transportation – Salina

Regional Airport has the capability to land nearly any aircraft, with four runways: the primary at 12,300 feet, a 4,300 foot parallel, and crosswinds runways at 6,500 and 3,648 feet. Over 1.2 million square feet of aircraft parking apron is available. The airport's two world-class FBOs annually deliver almost 4 million gallons of fuel to over 7,000 business jets and 3,000 military aircraft. This has earned Salina the recognition as "America's Fuel Stop."

- *AVFlight*, 2035 Beechcraft Rd., 825-6739, avflight.com
- *SeaPort Airlines*, provides scheduled air service daily in Salina, with flights to/from Kansas City International Airport. 888-573-2767, SeaPortAir.com
- Wichita's *Mid-Continent Airport* 90 minutes south, provides service via several carriers. 316-946-4700

Ground Transportation

Salina's fixed route bus system, *CityGo*, runs Monday through Friday, 6am-9pm, and Saturday 9am-5pm. Look for the green CityGo sign at stops throughout the community. Office: 340 N. Santa Fe, 826-1583, salinacitygo.com

Car Rental

- *Conklin Cars Salina South*, 2700 S. Ninth, 825-8271
- *Enterprise Rent-A-Car*, 1605 W. Crawford, 888-305-8051, enterprise.com
- *Long McArthur*, 3450 S. Ninth Street, 866-434-8790, longmcarthur.com
- *Marshall Automotive Group*, 3500 S. Ninth, 827-9641, marshallmotor.com
- *Hertz Rent-A-Car*, Salina Municipal Airport Terminal, 827-7237, hertz.com

Taxi Service

- *Sunflower Taxi & Courier Service LLC*, 915 W. Crawford, 826-1881

Charter Coach/Bus

- *Durham School Services*, 1510 State, 825-9241
- *Village Tours*, 804 N. Ninth, 825-4410, villagetours.net

Important Phone Numbers:

Highway Conditions: 511, or 866-KDOT (5368)

Police: 911, or 826-7210

Hospital: 452-7000

Visit Salina: 827-9301

Fire: 911, or 826-7430

Poison Control: 827-3187

City of Salina: 309-5700

Advertisers Index

Lodging

Best Western Plus	45
Candlewood Suites	Fold Out - IBC
Comfort Suites	45
Country Inn & Suites	22
LaQuinta Inn & Suites	41

Education

K-State Salina	(Inside) Fold Out Cover
Kansas Wesleyan University	43
Salina Public Library	29
St. John's Military School	30

Recreation & Entertainment

All Star Lanes	38
Central Kansas Flywheels / Yesteryear Museum	39
Kenwood Cove Aquatics Park	18
Rolling Hills Zoo	Back Cover
Salina Art Center	8
Salina Arts & Humanities	42
Salina Bicentennial Center	21
Salina Community Theatre	42
Salina Municipal Golf Course	19
Salina Symphony	7
Saline County Livestock & Expo Center	41
Smoky Hill Museum	3
Stiefel Theatre	7

Dining

Blue Skye Brewery & Eats	36
Cozy Inn	14
El Atoron	36
The Scheme	34

Sugar P's Cupcakery	35
Tucson's Steakhouse Saloon & Grill	48

Medical (or Health Care)

Mowery Clinic	46
Salina Pediatric Care	11
Salina Surgical Hospital	44
Salina Women's Clinic	11

Retail

Assurance Partners	35
Brooks Liquor	40
Central Mall	39
Consolidated Printing / Minolta	37
Eccentricity Too	34
The Flower Nook	35
The Market Shop	35
On the Pot	34
Quilting Bee	34
R & J Tax Service	47
Salina Downtown Inc.	Inside front Cover
Salina Vitamin	36
Simply Baby	34
Soggy Dog	35
The Toy Parade	35
Vanderbilt's	40
Yarns	36

Services

Blondell's	39
Residence 600	IBC Flap
SeaPort Airlines	38
Webster Conference Center	2

Explore, experience & enjoy!



salinadowntown.com

*Step Into the Past,
for Your Favorite Pizza*

The Scheme

123 N. 7th • Salina KS
785-823-5125

OPEN Thurs, Fri., Sat. 4:30 to close • Lunch: Thurs. & Fri. 11 a.m. to 1:30 p.m.



A Fun Women's Boutique

Be a little eccentric...
Eccentricity Too

Clothing, Scarves, Jewelry, Vera Bradley
104 N. Santa Fe | Downtown Salina



Simply Baby
and more

128 S. Santa Fe Salina, KS • 785-404-6410
Apparel NB-4T, unique gifts and
accessories, moms jewelry and much more
www.simplybabyandmore.com

Find us on



Quilting Bee

120 S. Santa Fe
Salina, KS 67401

(785) 823-9376
www.quiltingbee.net



a way fun place
to paint pottery!

www.paintourpot.com
111 N. Santa Fe 820-9212

Explore, experience & enjoy!



salinadowntown.com

**THE TOY
PARADE**



119 S. Santa Fe
TheToyParade.net
785-823-2231

Your Neighborhood
Toy Store



Assurance
PARTNERS

Visit our new downtown office!

201 E. Iron • Salina, KS
785-825-0286

yourassurance.com

INSURANCE PROTECTION FOR FAMILIES & BUSINESSES

The Flower Nook

Call, Click or Come In!

Wayne DeBey, AIFD & Peggy DeBey, Owners

208 E. Iron Ave. Salina, Kansas 67401

785.827.0351 • 1.800.499.NOOK (6665) • www.flownooksalina.com



**Soggy
Dog**

Salon & Suites, Inc.

Coming Soon!

- Spacious Suite Boarding
- Day Play Care
- Pawsh Wash Your Own Facilities
- In-Home Pet Sitting

www.soggydogsalonsuites.com 785.827.5759



Sugar P's
cupcakery

146 S. Santa Fe, Suite B Salina, KS 67401
sugarp_cupcakery@yahoo.com 785-643-1457
Marvena & A.V. Plank

**THE
MARKET SHOP**
GIFTS & HOME ACCENTS

101 S. Santa Fe

785.823.5885

Explore, experience & enjoy!



salinadowntown.com

El Atorón
Mexican Restaurant & Bar
DAILY SPECIALS!

M-Th 11-9
Fr-Sat 11-10
Sun 11-9

117 N. SANTA FE • 785.823.1200

YARN

2nd Friendliest Yarn Store in the Universe
785-820-KNIT

148 South Santa Fe • yarnssoldandtold.com • Tues-Fri 10-5:30 • Sat 10-4

Salina VITAMIN LLC

Your Hometown Vitamin and Supplement Source

112 W. Iron Ave. • 785.404.6144 • www.salinavitamin.com • Open Monday-Friday 9am-5pm

BLUE SKYE
brewery and eats

Specializing in craft beer,
woodfired pizza and a
friendly environment
where you'll always
feel welcome.

Open 7 days a
week at 11:00 am
116 North Santa Fe



State-of-the-art design, printing, binding, mailing, and shipping services. Our sales staff are knowledgeable and eager to serve you with all your printing and advertising needs.



KONICA MINOLTA

*Serving 19 Counties – We're proud to be your
authorized Konica Minolta Dealer in Central Kansas*



785.825.5426 • 1.800.432.0266

319 S. 5th Street • Salina, Kansas 67401

www.consolidatedprinting.com



ALL STAR LANES

SALINA, KANSAS



1st Game Free
with coupon

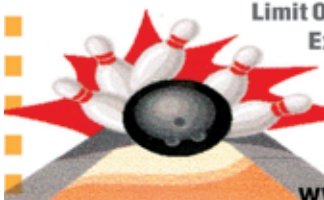
Limit One Coupon Per Group of 4

Expires April 30, 2015

Shoe rental not included

624 S. Broadway
(785) 827-6730

www.allstarlanesks.com



Fly from Salina, KS



to

Kansas City
Memphis
Wichita
Great Bend
& more

SEA  PORT

AIRLINES
www.seaportairlines.com

Hometown service. Worldwide connections.

Central Kansas Flywheels

Yesteryear Museum

Agricultural
Living History

1100 W. Diamond Dr.
Salina, KS

785.825.8473
Tues.-Sat.: 9-5
Closed Sun. & Mon.



Dillard's, JCPenney,
Sears and over 60
specialty shops

2259 S. 9th St.
Salina, KS
785.825.4305

Mon - Sat 10am - 9pm
Sunday 12pm - 6pm

Central Mall has made exciting changes and will continue to throughout the next year to ensure customers have the best shopping experience possible.

Fabulous Stores

Central Mall offers the best shopping in the entire area!
Old Navy . Buckle . Journeys . rue21 . Maurices . Bath & Body Works . Victoria's Secret . Justice . Books A Million

Dining

Hungry? Visit one of our fine restaurants or eateries...
Carlos O'Kelly's . Taco John's . The Pretzelmaker . Imperial Garden . Dachainos Pizzeria

Entertainment

See a movie and visit the largest aquarium in Kansas!
Cinema 10 . Aquarium . Jump for Joy



CENTRAL MALL
CentralMallSalina.com



Where to Shop

Blondell's
SALON & DAY SPA
FULL SERVICE SALON & SPA

Massage • Pedicure
Spa Packages

Mon-Thurs 9-9
Fri 8-8
Sat 8-5

www.blondells-salon.com

1933 S. Ohio St • Salina, KS 67401 • 785.823.1911

VANDERBILT'S

YOUR WORK BOOT CENTER



BOOTS • JEANS SPORTING GOODS

3005 Enterprise Dr., Salina (Behind Lowe's)

785.823.7027

www.vanderbilts.com

Open Monday - Saturday 9-8; Sunday 12-5



SALINA'S SUPERMARKET LIQUOR STORE

**ONE OF THE LARGEST
SELECTIONS IN KANSAS**

**NEW FINE WINE ROOM
AND
NEW CRAFT BEER CAVE**

1845 SOUTH 9TH

(785) 827-0970

Tell US about YOU!

Visit Salina wants to know more about our visitors... namely YOU! Go to VisitSalina.org, and under the Quick Links, click on:

- Visitor Profile, and/or
- Rate our Visit Salina Guide

Take a few moments to complete either or both surveys and submit by June 1, 2015, and you will be eligible to win one of two \$500 VISA gift cards. Complete both surveys for TWO chances to WIN!

Some restrictions apply. See website surveys for details.

Pet Friendly

Complimentary Breakfast

Free WIFI

Indoor Pool

Guest Laundry

Business Center

Fitness Room

Smoke-Free

**201 E. Diamond Drive
at I-70 & 9th exit #252**

785.827.9000



SALINE COUNTY

Livestock & Expo
CENTER



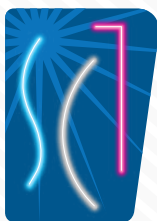
**SALINE COUNTY LIVESTOCK
AND EXPO CENTER**

900 Greeley • Salina, KS 67401

785-826-6532 OR 785-826-6531

www.saline.org





SALINA
COMMUNITY
THEATRE

2014-2015

IT'S ALL FOR
You!

Mary Poppins

Vanya AND Sonja
AND Masha AND Spike

A Christmas Story
THE MUSICAL

Barefoot IN THE Park

Clybourne Park

Deathtrap

West Side Story

Season Tickets ON SALE NOW!

CALL 785.827.3033

CLICK salinatheatre.com

COME BY 303 E. Iron | Salina

Explore. Engage. Experience.

Award-winning theatre

Galleries, exhibits, and
public art

Nationally accredited
museums

Amazing live
entertainment



PHOTO COURTESY TOM DORSEY/SALINA JOURNAL

SALINA ARTS & HUMANITIES
Advocacy and support of the arts since 1966
A department of the City of Salina

salinaarts.com

SALINA
ARTS
& HUMANITIES

riverfestival.com



**BE
YOURSELF**
(at the center of it all)



**KANSAS
WESLEYAN**
UNIVERSITY

100 E. Claflin Ave | Salina, KS
785.827.5541 | www.kwu.edu





Salina Surgical Hospital



Feel
the Difference

401 S. Santa Fe Ave.
Salina, KS 67401

785.827.0610
1.866.927.0610 Toll Free

www.salinasurgical.com

Salina Surgical Hospital is jointly owned by Salina Regional Health Center (50%) and a group of local physicians (<2% per physician).



BY CHOICE HOTELS



- Free "Your Morning" Breakfast
- Free WiFi Access
- Microwave & Refrigerator
- Meeting Room
- Indoor Pool & Sauna
- Close to South Salina Shopping
- 100% Non-Smoking

715 W. Schilling Rd • Salina, KS • 785.404.6944
www.choicehotels.com/hotel/ks128



MIDWEST INN & SUITES

- 100% Non-Smoking
- Pet Friendly
- Indoor Pool with Water Slide
- Free WiFi
- Free Hot Continental Breakfast
- Suites & Connecting Rooms Available
- Pillow Top Mattresses
- 38" Flat Screen TV's
- Walking Distance to Walmart



www.bestwestern.com

745 W. Schilling Rd • Salina, KS 67401 • (785) 493-9800



(800) 223-0845

www.moweryclinic.com

737 E. Crawford, Salina (785) 827-7261

655 S. Santa Fe, Salina (785) 825-9024

Allergy/Immunology

Dr. Bennett Radford

Gastroenterology

Dr. William Alsop

Dr. Paul Johnson

Dr. LaVelle Ellis

Internal Medicine

Dr. David Dennis

Dr. Richard Yapple

Ob/Gyn

Dr. Steve Sebree

Dr. Jeff Knox

Dr. Joel Parriott

Dr. David Prendergast

Dr. Natalie Morgan

Dr. Leslie Ablard

Ancillary Services

Laboratory

X-ray

Digital Mammography

3D/4D Sonography

Cardiac/Vascular/Nuclear Lab

Bone Densitometry

Capsule Endoscopy

Varicose Vein Procedures

Cardiology

Dr. Mark Mikinski

Dr. Curtis Kauer

Dr. Karil Bellah

Dr. David Battin

Infectious Disease

Dr. Jacob Hodges

Nephrology

Dr. Brad Stuewe

Dr. Henry Reed

Dr. Brian Pavey

Pediatrics

Dr. Ed Rosales

Dr. Alisa Bridge

Surgery

Dr. Ted Macy

Dr. David Smith

Dr. Earl Matthews

Dr. Chris Rupe

Dr. Seth Vernon



R^{AND}J SALINA TAX SERVICE, Inc.

318 W. Cloud St. • Salina, KS 67401

Phone: 785.827.1304 • Fax: 785.827.0383

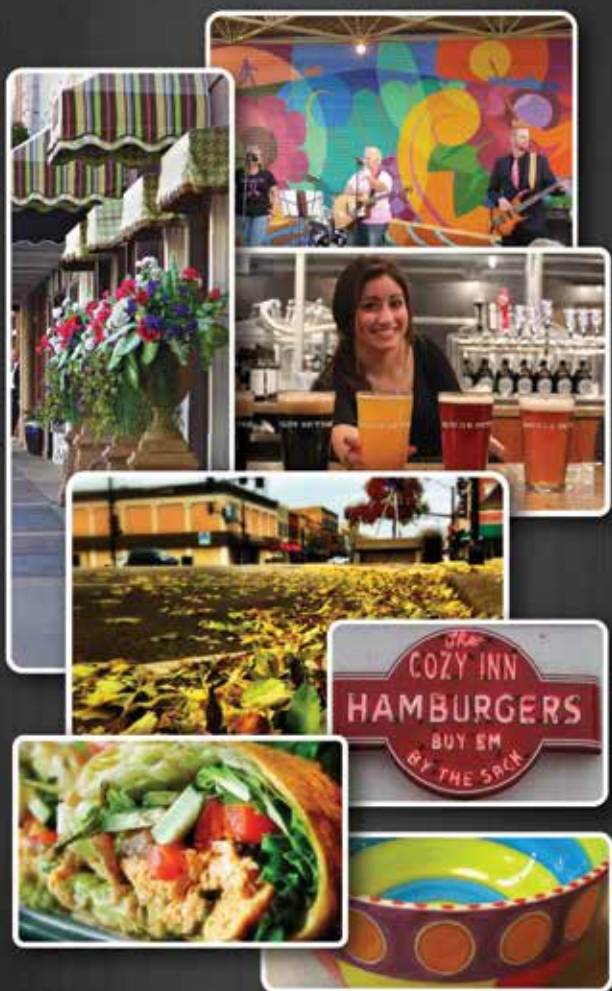
www.randjsalinatax.com

\$5.00 OFF

Tax Preparation

Expires April 15, 2015

“1040 Reasons to Call”



Explore, experience and enjoy
what Salina Downtown
has to offer!



www.salinadowntown.com

Primary Annual Events

January

No-till on the Plains Winter Expo
Kids Wrestling TOC

February

KSHSAA 4A State Wrestling
KS 6 & Under State Wrestling
Championships
Salina Home & Leisure Show

March

KSHSAA 4A Boys/Girls
State Basketball
St. Paddy's Day Pub Crawl
NJCAA Div I Women's
Basketball Nationals
Mid America Farm Expo

April

ISIS Shrine Circus
Salina Tech Vehicle Extravaganza
Saline CO Mounted Patrol Rodeo

May

Discover Salina Naturally
SculptureTour Salina UNwrap Party
KSHSAA 4A Div I State Baseball/
Softball

June

Kansas Square Dance Convention
Smoky Hill River Festival
Father's Day Car Show at RHZ
Lavender Harvest Festival

July

All American Fourth & Skyfire!
Grand Slam Baseball Tournament
KKOA Leadsled Spectacular Car Show

August

Smoky Hill Sportsman Expo
Tri Rivers Fair and Rodeo

September

Sunflower Senior Fair
Land Institute Prairie Festival
Smoky Hill Museum Street Fair
German Car Show

October

Antique Engine & Steam Show
Pumpkin PaZOOla
Blues Masters at the Crossroads
KSHSAA 4A State Volleyball

November

See 'N Sell Craft Show
Christmas Festival &
Parade of Lights
Heart Land Toy Show
KSHSAA 4A State Football

December

Prairie Longrifles Wild
West Trade Show
Yesteryear Museum Drive-thru
Christmas Light Show

Click on Calendar at

VisitSalinaKS.org

Stress Less, Enjoy More!

*Enjoy the warmth, comfort
& security of Residence 600.*

*Salina's Premiere, full
concierge, senior living.*

*It's More Affordable
Than You Think!*

*Call Sheryl Today for your
personal tour and details!*



600 E. Elm St., Salina | 785-822-1300 | www.residence600.com



DISCOVER YOUR FUTURE

Kansas State University Salina provides a small campus atmosphere with a professional learning environment built on theory and industry application in the classroom. Students can choose from 16 undergraduate programs and a professional master of technology.

Schedule a visit today
salina.k-state.edu

KANSAS STATE
UNIVERSITY

Salina



Consider us home.



Ideal for one night or 30 days

To make your Reservations call

785.823.6939 or
www.candlewoodsuites.com/salinaks



Government Rates Apply
Full Kitchens in Every Room

**2650 Planet Ave
Salina, KS 67401**

PRIORITYCLUB
REWARDS

SLITHER ON DOWN!



REPTILES

The Beautiful and the Deadly

Through September 1, 2014

- Wildlife Museum
- Children's Exploration Room
- Exhibit Gallery
- Tram Rides
- Restaurant
- Gift Shops



CAN YOU SURVIVE?

September 20, 2014-
January 4, 2015

AMERICAN
ADVENTURE

1607

785-827-9488
6 miles west of Salina, KS on I-70
Open 7 days a week!



www.rollinghillszoo.org